

## 10 FLOOR PLANS OF RESIDENTIAL PROPERTIES IN THE DEVELOPMENT 發展項目的住宅物業的樓面平面圖

The remarks and legends on this page apply to all pages of "Floor plans of residential properties in the development".  
在本頁上之備註和圖例適用於全部的「發展項目的住宅物業的樓面平面圖」頁數。

### Legends of the Floor Plans

#### 樓面平面圖圖例

36 CU.M. FS WATER TANK	=	36 Cubic Meter Fire Services Water Tank 36立方米消防水箱
A/C PLATFORM	=	Air-conditioner Platform 冷氣機平台
A/C UNIT	=	Air-conditioning Unit 冷氣機
ARCH. FEATURE	=	Architectural Feature 建築裝飾
BAL.	=	Balcony 露台
BAL. ABOVE	=	Balcony Above 上層位置為露台
BATH.	=	Bathroom 浴室
BATH. 1	=	Bathroom 1 浴室 1
BATH. 2	=	Bathroom 2 浴室 2
BATH. 3	=	Bathroom 3 浴室 3
B.R.1	=	Bedroom 1 睡房 1
B.R.2	=	Bedroom 2 睡房 2
B.R.3	=	Bedroom 3 睡房 3
DIN.	=	Dining Room 飯廳
E.M.C.	=	Electric Meter Cabinet 電錶櫃
ELECT. CABLE DUCT	=	Electric Cable Duct 電線管道
F.H.	=	Fire Hydrant 消防栓
F.S. RISER DUCT	=	Fire Services Riser Duct 消防上水管道
H.R.	=	Hose Reel 消防喉轆
KIT.	=	Kitchen 廚房
LIV.	=	Living Room 客廳
M.B.R.	=	Master Bedroom 主人睡房
P.D.	=	Pipe Duct 管道
RS&MRR	=	Refuse Storage & Material Recovery Room 垃圾及物料回收房
STORE 1	=	Store Room 1 儲物室 1
STORE 2	=	Store Room 2 儲物室 2
U.P.	=	Utility Platform 工作平台
U.P. ABOVE	=	Utility Platform Above 上層位置為工作平台
W.M.C.	=	Water Meter Cabinet 水錶櫃
□□□	=	Built-in fittings provided in the flats 隨樓附送的嵌入式裝置

#### Remarks:

1. Common pipes exposed or enclosed in cladding may be located at the balcony, utility platform, flat roof, roof or external wall of some residential units.
2. There may be sunken slabs at some parts of the ceiling inside some residential units for the installation of mechanical and electrical services of the floor above or due to the structural, architectural and/or decoration design requirements of the floor above.
3. There may be ceiling bulkheads or false ceiling inside some residential units for the installation of air-conditioning conduits and/or other mechanical and electrical services.
4. The dimensions of the floor plans are all structural dimensions in millimeter.
5. Blank areas on flat roof are common areas for building facility maintenance.

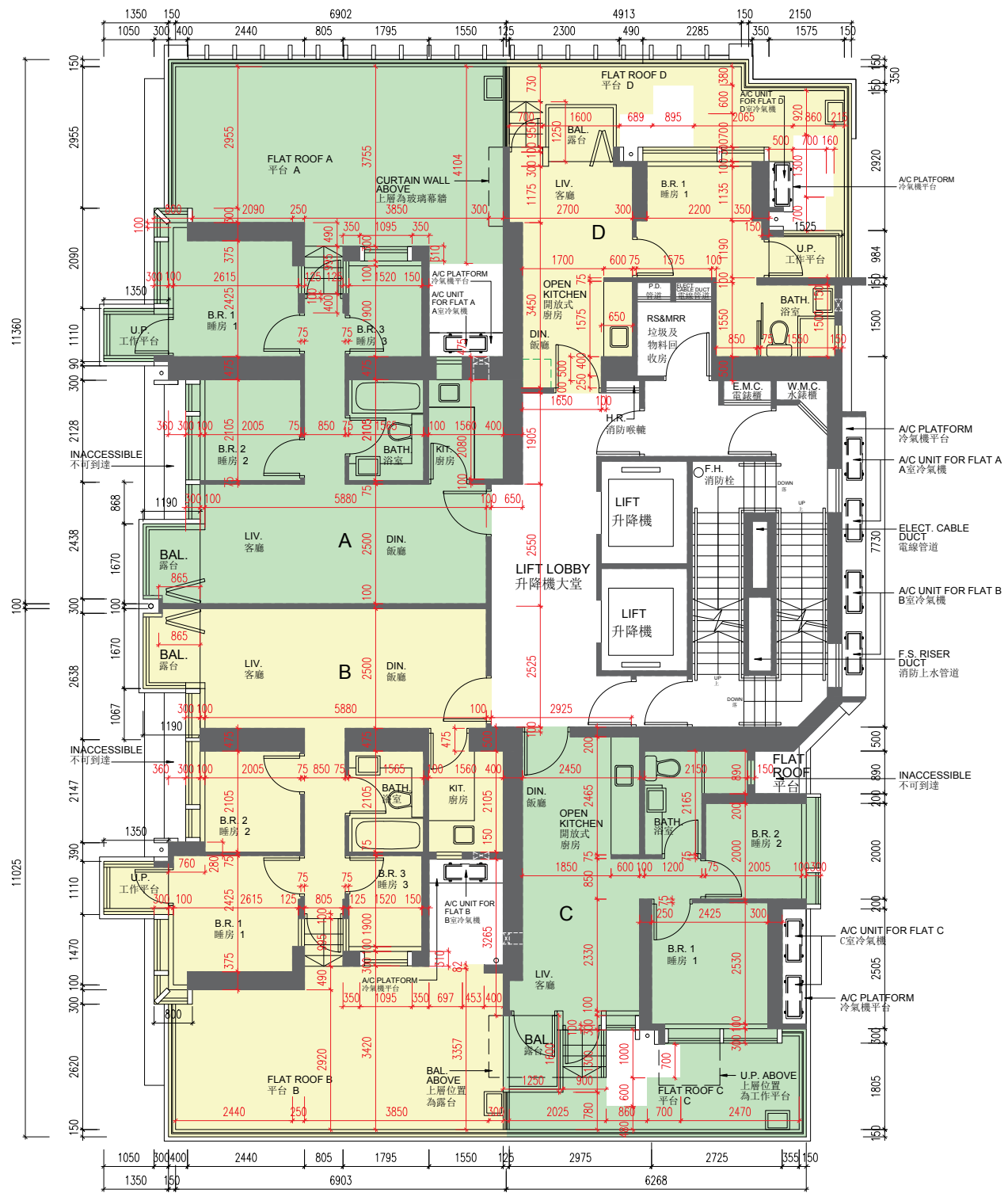
#### 備註：

1. 部分住宅單位的露台、工作平台、平台、天台或外牆或設有外露之公用喉管，或外牆裝飾板內藏之公用喉管。
2. 部分住宅單位內之部分天花或有跌級樓板，用以安裝上層之機電設備或配合上層之結構、建築設計及/或裝修設計上的需要。
3. 部分住宅單位內或設有假陣或假天花用以安裝冷氣喉管及/或其他機電設備。
4. 平面圖所列之數字以毫米標示之建築結構尺寸。
5. 平台空白位置為供維修大廈設備使用的公用地方。

# 10 FLOOR PLANS OF RESIDENTIAL PROPERTIES IN THE DEVELOPMENT

## 發展項目的住宅物業的樓面平面圖

### 7/F Floor Plan 7樓 平面圖



SCALE 比例 : 0m(米) 5m(米)

Each Residential Property 每個住宅物業	Flat 室 Floor 樓層	A	B	C	D
Floor-to-Floor Height (mm) 層與層之間的高度 (毫米)	7/F 7樓	3500	3500	3500	3500
Thickness of Floor Slab (excluding plaster) (mm) 樓板 (不包括灰泥) 的厚度 (毫米)	7/F 7樓	150 175	150 175	150	150

Notes: 1. Blank areas on flat roof are common areas for building facility maintenance.  
2. The dimensions in floor plans are all structural dimensions in millimeter.

備註：1. 平台空白位置為供維修大廈設備使用的公用地方。  
2. 平面圖所列的數字為以毫米標示之建築結構尺寸。

The internal areas of the residential properties on the upper floors will generally be slightly larger than those on the lower floors because of the reducing thickness of the structural walls on the upper floors.

因住宅物業的較高樓層的結構牆的厚度遞減，較高樓層的內部面積，一般比較低樓層的內部面積稍大。

Please refer to page 18 of this sales brochure for the remarks and legends of the terms and abbreviations for the floor plans of residential properties.

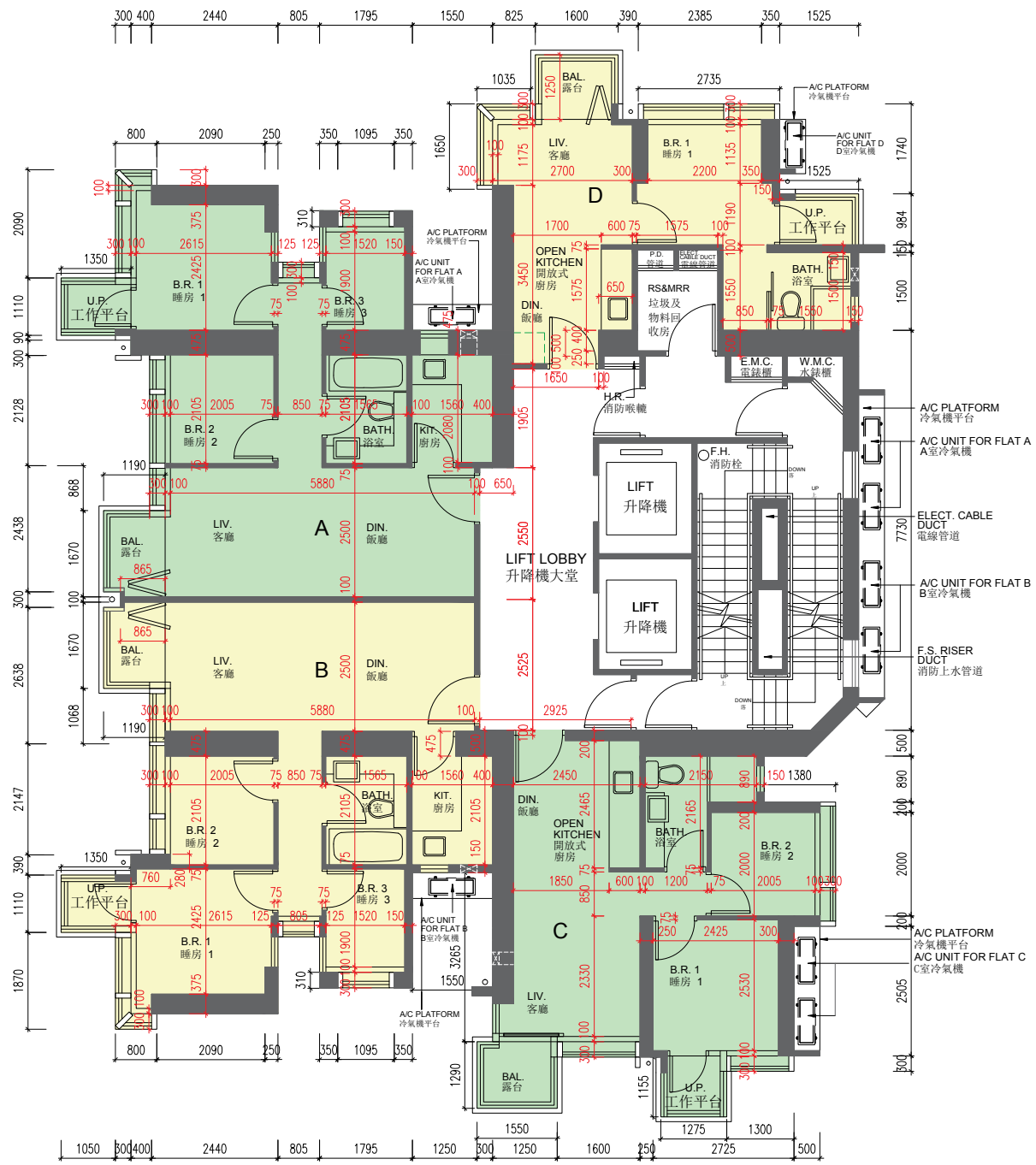
請參閱本售樓說明書第18頁為住宅物業樓面平面圖而設之備註及名詞及簡稱的圖例。

# 10 FLOOR PLANS OF RESIDENTIAL PROPERTIES IN THE DEVELOPMENT

## 發展項目的住宅物業的樓面平面圖

### 8/F-12/F, 15/F-16/F, 18/F-23/F, 25/F-33/F & 35/F-40/F Floor Plan

#### 8樓-12樓，15樓-16樓，18樓-23樓，25樓-33樓及35樓-40樓 平面圖



SCALE 比例：0m(米) 5m(米)

Each Residential Property 每個住宅物業	Floor 樓層	Flat 室			
		A	B	C	D
Floor-to-Floor Height (mm) 層與層之間的高度 (毫米)	8/F-12/F, 15/F-16/F, 18/F-23/F, 25/F-33/F & 35/F-39/F 8樓-12樓，15樓-16樓，18樓-23樓， 25樓-33樓及35樓-39樓	3500	3500	3500	3500
	40/F 40樓	3150 3500	3150 3500	3500	3500
Thickness of Floor Slab (excluding plaster) (mm) 樓板 (不包括灰泥) 的厚度 (毫米)	8/F-12/F, 15/F-16/F, 18/F-23/F, 25/F-33/F & 35/F-40/F 8樓-12樓，15樓-16樓，18樓-23樓， 25樓-33樓及35樓-40樓	150 175	150 175	150	150

Notes: The dimensions in floor plans are all structural dimensions in millimeter.

備註：平面圖所列的數字為以毫米標示之建築結構尺寸。

The internal areas of the residential properties on the upper floors will generally be slightly larger than those on the lower floors because of the reducing thickness of the structural walls on the upper floors.

因住宅物業的較高樓層的結構牆的厚度遞減，較高樓層的內部面積，一般比較低樓層的內部面積稍大。

Please refer to page 18 of this sales brochure for the remarks and legends of the terms and abbreviations for the floor plans of residential properties.

請參閱本售樓說明書第18頁為住宅物業樓面平面圖而設之備註及名詞及簡稱的圖例。

# 10 FLOOR PLANS OF RESIDENTIAL PROPERTIES IN THE DEVELOPMENT

## 發展項目的住宅物業的樓面平面圖

### 41/F Floor Plan

#### 41樓 平面圖



SCALE 比例： 0m(米) 5m(米)

Each Residential Property 每個住宅物業	Flat 室 Floor 樓層	A	B	C
Floor-to-Floor Height (mm) 層與層之間的高度 (毫米)	41/F 41樓	4000	4000	4000
Thickness of Floor Slab (excluding plaster) (mm) 樓板 (不包括灰泥) 的厚度 (毫米)		150 175	150	150

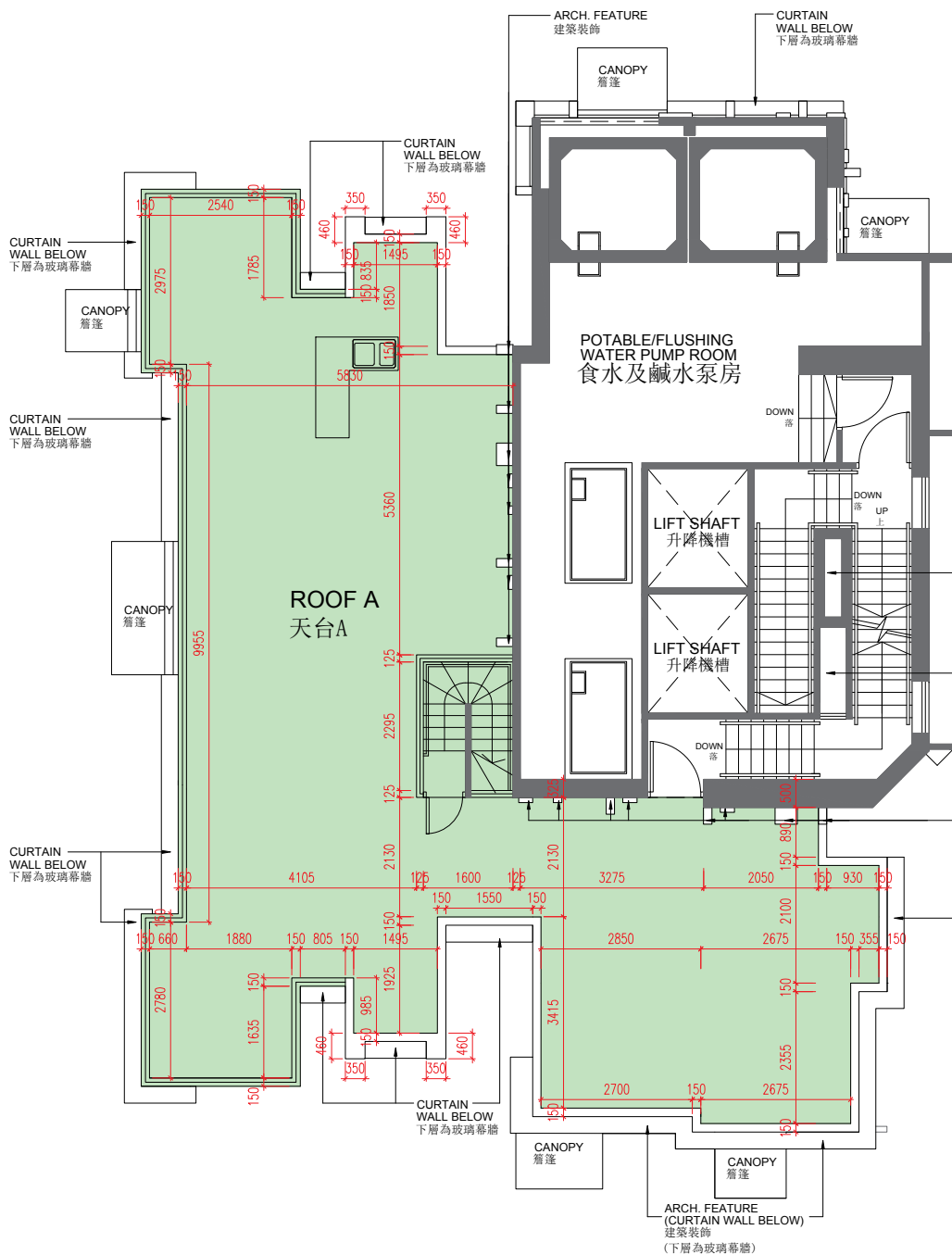
Notes: The dimensions in floor plans are all structural dimensions in millimeter.  
備註：平面圖所列的數字為以毫米標示之建築結構尺寸。

The internal areas of the residential properties on the upper floors will generally be slightly larger than those on the lower floors because of the reducing thickness of the structural walls on the upper floors.  
因住宅物業的較高樓層的結構牆的厚度遞減，較高樓層的內部面積，一般比較低樓層的內部面積稍大。  
Please refer to page 18 of this sales brochure for the remarks and legends of the terms and abbreviations for the floor plans of residential properties.  
請參閱本售樓說明書第18頁為住宅物業樓面平面圖而設之備註及名詞及簡稱的圖例。

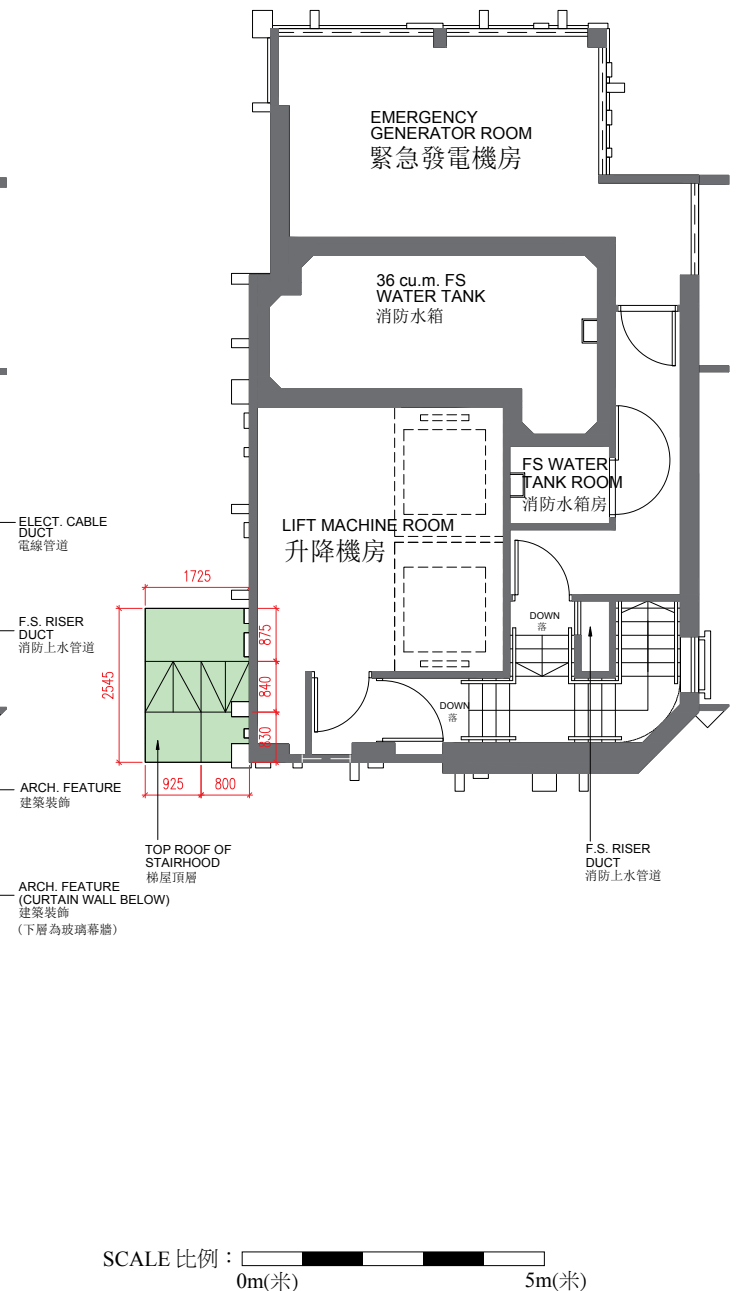
# 10 FLOOR PLANS OF RESIDENTIAL PROPERTIES IN THE DEVELOPMENT

## 發展項目的住宅物業的樓面平面圖

Roof Plan  
天台平面圖



Electrical & Mechanical  
and Water Tank Plan  
機電及水箱平面圖



Each Residential Property 每個住宅物業	Floor 樓層	A
Floor-to-Floor Height (mm) 層與層之間的高度 (毫米)		Not Applicable 不適用
Thickness of Floor Slab (excluding plaster) (mm) 樓板 (不包括灰泥) 的厚度 (毫米)	Roof 天台	Not Applicable 不適用

- Notes: 1. The dimensions in floor plans are all structural dimensions in millimeter.  
2. The area of the top roof of stairhood is not included in the area of roof/flat roof of Flat A on 41/F.  
3. The top roof of stairhood is not provided with any access, and is not enclosed by parapet, railing or balustrade.

- 備註：1. 平面圖所列的數字為以毫米標示之建築結構尺寸。  
2. 梯屋頂層的面積不計算於41樓A室的天台/平台面積之內。  
3. 梯屋頂層並無設有任何入口或上落途徑，且無矮牆、護欄或扶欄圍封。

The internal areas of the residential properties on the upper floors will generally be slightly larger than those on the lower floors because of the reducing thickness of the structural walls on the upper floors.

因住宅物業的較高樓層的結構牆的厚度遞減，較高樓層的內部面積，一般比較低樓層的內部面積稍大。

Please refer to page 18 of this sales brochure for the remarks and legends of the terms and abbreviations for the floor plans of residential properties.

請參閱本售樓說明書第18頁為住宅物業樓面平面圖而設之備註及名詞及簡稱的圖例。