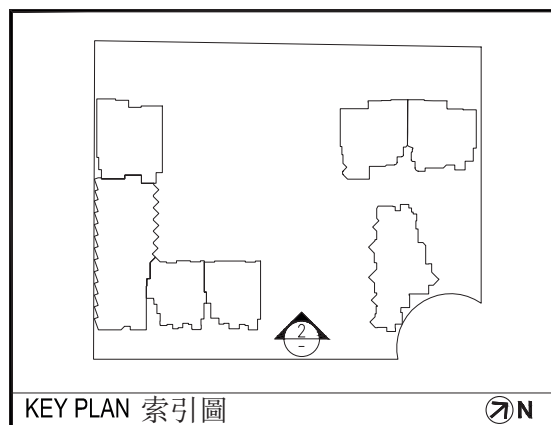


發展項目的認可人士已經證明該等立面：

- (a) 以2019年2月12日的情況為準的發展項目的經批准的建築圖則為基礎擬備；及
- (b) 大致上與發展項目的外觀一致。

It has been certified by the Authorized Person for the Development that the elevations:

- (a) are prepared on the basis of the approved building plans for the Development as of 12th February 2019; and
- (b) are in general accordance with the outward appearance of the Development.

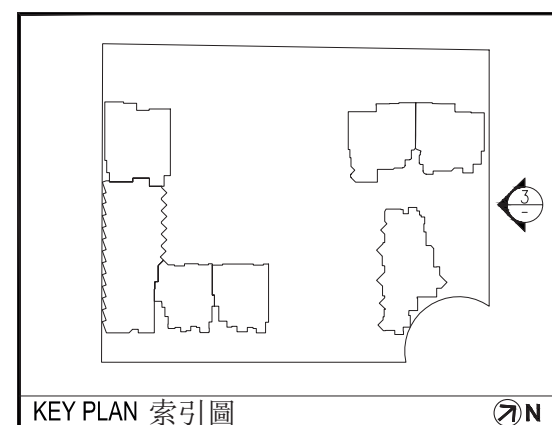


發展項目的認可人士已經證明該等立面：

- (a) 以2019年2月12日的情況為準的發展項目的經批准的建築圖則為基礎擬備；及
- (b) 大致上與發展項目的外觀一致。

It has been certified by the Authorized Person for the Development that the elevations:

- (a) are prepared on the basis of the approved building plans for the Development as of 12th February 2019; and
- (b) are in general accordance with the outward appearance of the Development.



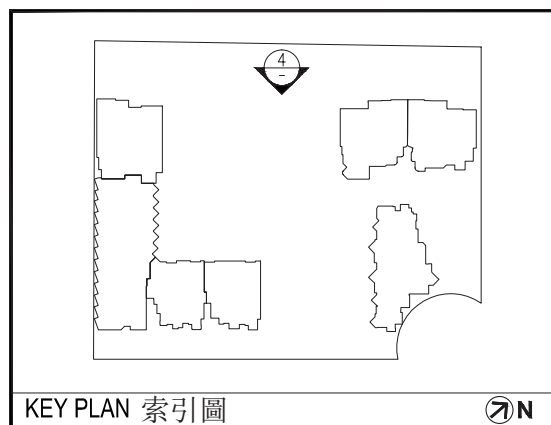
發展項目的認可人士已經證明該等立面：

- (a) 以2019年2月12日的情況為準的發展項目的經批准的建築圖則為基礎擬備；及
- (b) 大致上與發展項目的外觀一致。

It has been certified by the Authorized Person for the Development that the elevations:

- (a) are prepared on the basis of the approved building plans for the Development as of 12th February 2019; and
- (b) are in general accordance with the outward appearance of the Development.





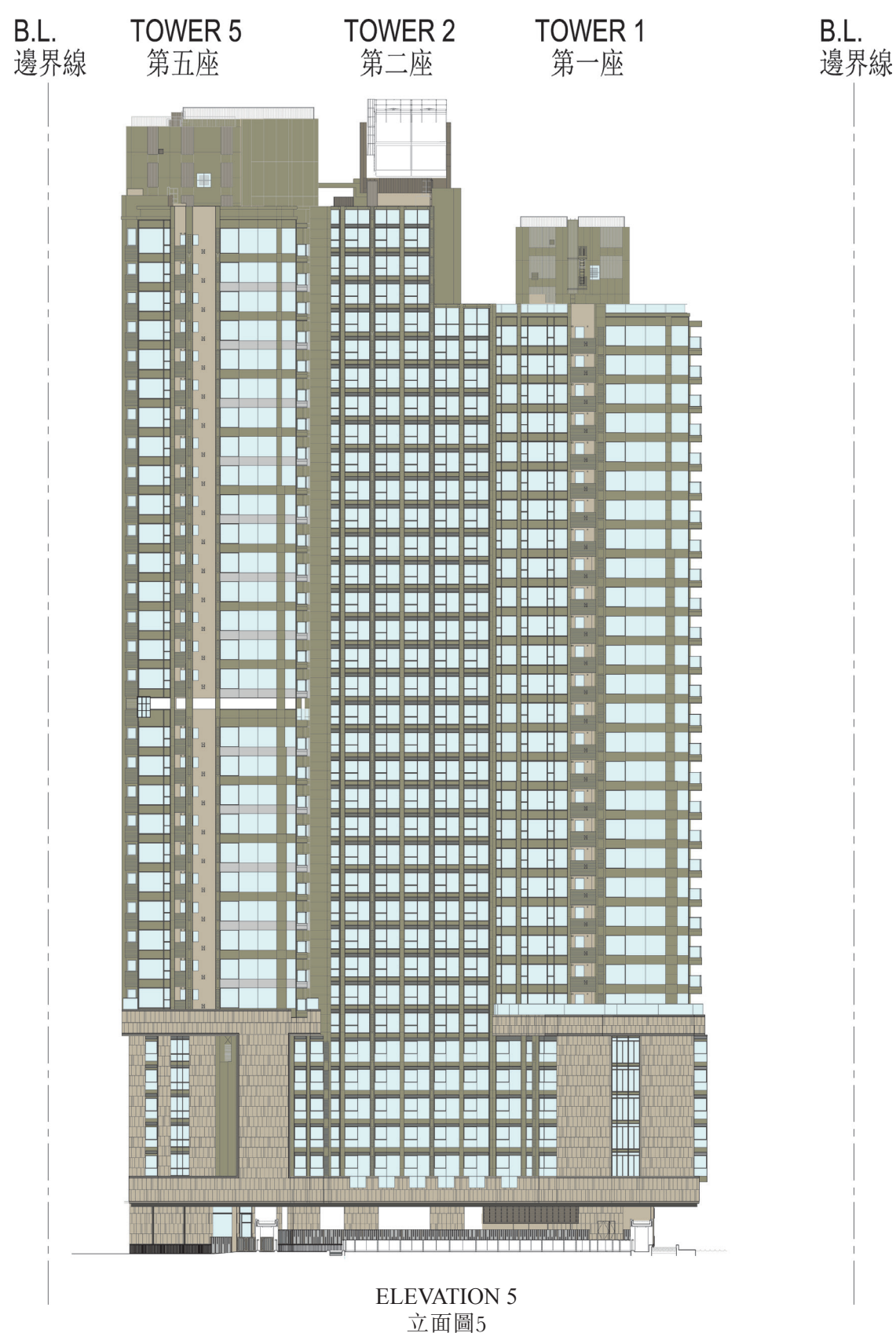
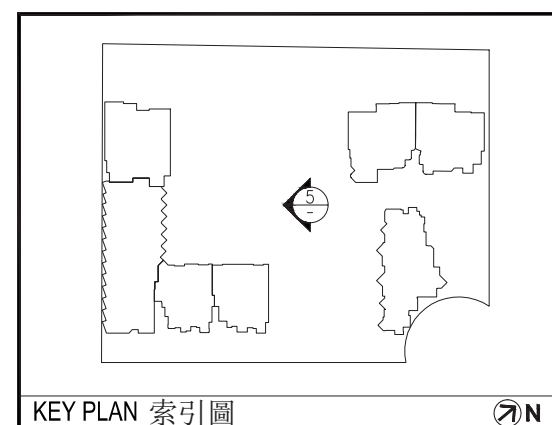
發展項目的認可人士已經證明該等立面：

- (a) 以2019年2月12日的情況為準的發展項目的經批准的建築圖則為基礎擬備；及
- (b) 大致上與發展項目的外觀一致。

It has been certified by the Authorized Person for the Development that the elevations:

- (a) are prepared on the basis of the approved building plans for the Development as of 12th February 2019; and
- (b) are in general accordance with the outward appearance of the Development.



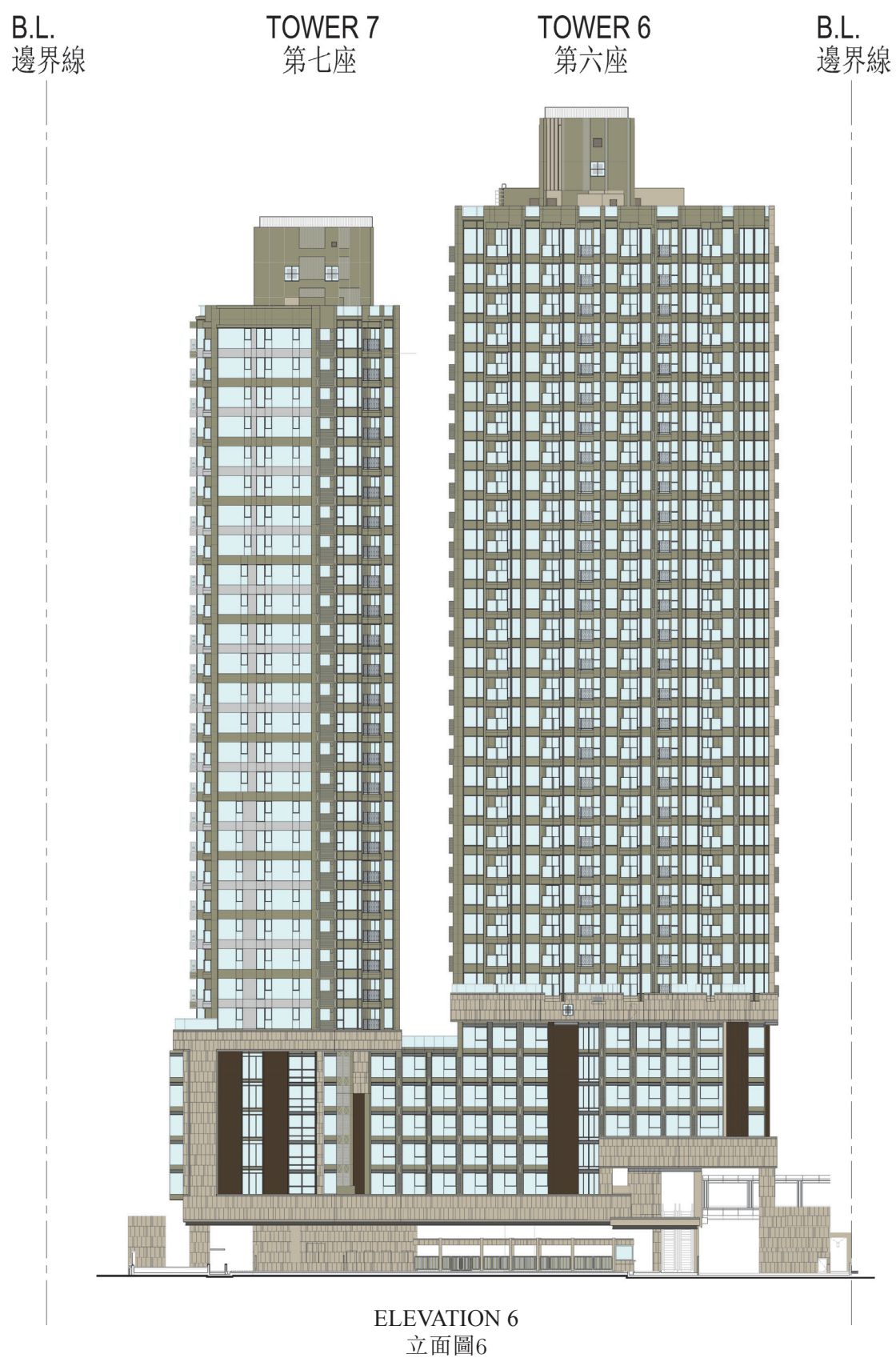
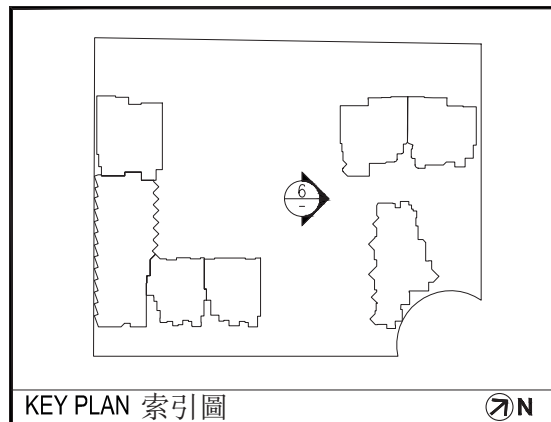


發展項目的認可人士已經證明該等立面：

- (a) 以2019年2月12日的情況為準的發展項目的經批准的建築圖則為基礎擬備；及
- (b) 大致上與發展項目的外觀一致。

It has been certified by the Authorized Person for the Development that the elevations:

- (a) are prepared on the basis of the approved building plans for the Development as of 12th February 2019; and
- (b) are in general accordance with the outward appearance of the Development.



發展項目的認可人士已經證明該等立面：

- (a) 以2019年2月12日的情況為準的發展項目的經批准的建築圖則為基礎擬備；及
- (b) 大致上與發展項目的外觀一致。

It has been certified by the Authorized Person for the Development that the elevations:

- (a) are prepared on the basis of the approved building plans for the Development as of 12th February 2019; and
- (b) are in general accordance with the outward appearance of the Development.

公用設施的類別 Category of common facilities	有蓋範圍 Covered Area		無上蓋範圍 Uncovered Area		總數 Total	
	面積 (sq.m. 平方米)	面積 (sq.ft. 平方呎)	面積 (sq.m. 平方米)	面積 (sq.ft. 平方呎)	面積 (sq.m. 平方米)	面積 (sq.ft. 平方呎)
住客會所 (包括供住客使用的任何康樂設施) Residents' clubhouse (including any recreational facilities for residents' use)	1,743.373	18,765	146.156	1,573	1,889.529	20,339
位於發展項目中的建築物的天台或在天台和最低一層住宅樓層之間的任何一層的、供住客使用的公用花園或遊樂地方 (不論是稱為公用空中花園或有其他名稱) Communal garden or play area for residents' use on the roof, or on any floor between the roof and the lowest residential floor, of a building in the Development (whether known as a communal sky garden or otherwise)	不適用 Not Applicable					
位於發展項目中的建築物的最低一層住宅樓層以下的、供住客使用的公用花園或遊樂地方 (不論是稱為有蓋及園景的遊樂場或有其他名稱) Communal garden or play area for residents' use below the lowest residential floor of a building in the Development (whether known as a covered and landscaped play area or otherwise):	1,215.133	13,079	384.142	4,135	1,599.275	17,214

備註：以平方呎顯示之上述面積以1平方米 = 10.7639平方呎換算，並四捨五入至整數。  
Note : The areas as specified above in square feet are converted at a rate of 1 square metre = 10.7639 square feet and rounded off to the nearest integer.

- 1

關於發展項目的分區計劃大綱圖的文本供閱覽的互聯網網站的網址為：[www.ozp.tpb.gov.hk](http://www.ozp.tpb.gov.hk)
- 2

指明住宅物業的每一公契在將指明住宅物業提供出售的日期的最新擬稿的文本存放在指明住宅物業的售樓處，以供閱覽。無須為閱覽付費。
1.

The address of the website on which a copy of the outline zoning plan relating to the Development is available is: [www.ozp.tpb.gov.hk](http://www.ozp.tpb.gov.hk).
2.

A copy of the latest draft of every deed of mutual covenant in respect of the specified residential property as at the date on which the specified residential property is offered to be sold is available for inspection at the place at which the specified residential property is offered to be sold. The inspection is free of charge.



1. 外部裝修物料	
細項	描述
(a) 外牆	住宅大樓及酒店大樓外牆裝修物料為外牆磚、鋁板裝飾、玻璃、天然石材及幕牆。住宅大樓以下的酒店部分鋪砌天然石材、外牆磚、玻璃、鋁板裝飾、玻璃牆及幕牆。
(b) 窗	選用氟碳噴塗鋁質窗框。  所有客廳/飯廳、睡房、廚房及工作間選用透明強化玻璃，以下廚房、工作間及浴室除外。  以下單位的廚房選用雙面酸蝕半透明強化玻璃： 第3座B單位 第5座A單位 第6座D及E單位 第7座B單位 第8座A單位  以下單位的工作間選用雙面酸蝕半透明強化玻璃： 第5座A單位及第6座A單位  所有浴室選用雙面酸蝕半透明強化玻璃。
(c) 窗台	不適用
(d) 花槽	不適用
(e) 陽台或露台	鋪砌天然石材、鋁板裝飾，裝設強化玻璃及金屬圍欄。  天花： 第6座A、C、D及E單位於外牆漆下設鋁條天花。  其他單位：批盪後再髹外牆漆。  地台： 鋪砌天然石材。  所有露台皆有蓋。  沒有陽台。
(f) 乾衣設施	沒有
2. 室內裝修物料	
細項	描述
(a) 大堂	住宅入口大堂牆身以天然石材、裝飾鏡及不銹鋼裝飾至見光處。地台鋪砌天然石材至見光處。天花裝修物料假天花做石膏板及不銹鋼條至見光處。  各層住宅電梯大堂及第3及5座之消防員電梯大堂牆身以天然石材、木皮、乙稀基飾面及不銹鋼裝飾至見光處。地台鋪砌天然石材至見光處。假天花做石膏板，批盪後再髹乳膠漆至見光處，及配不銹鋼條、木條梭子和牆紙飾面至見光處。而第6座各層住宅電梯大堂天花部分為鋁質假天花條。  第1、7及8座之消防員電梯大堂牆身以瓷磚至見光處。地台鋪砌同質磚至見光處。假天花做石膏板，批盪後再髹乳膠漆至見光處。
(b) 內牆及天花板	牆壁： 客廳/飯廳及睡房—見光處批盪後再髹乳膠漆。  天花板： 客廳/飯廳及睡房—見光處批盪後再髹乳膠漆、石膏板假天花，批盪後再髹乳膠漆。

(c) 內部地板	客廳/飯廳及睡房見光處地台鋪砌木地板、木腳線，沿露台門（如提供）及工作平台門（如提供）鋪砌天然石材。
(d) 浴室	牆壁： 各浴室： 鋪砌天然石材、不銹鋼及鏡於見光處至假天花。  洗手間： 鋪砌瓷磚於見光處至假天花。  天花板： 各浴室及洗手間： 裝設鋁質假天花至見光處。  地板： 各浴室： 鋪砌天然石材至見光處。  洗手間： 鋪砌同質磚至見光處。
(e) 廚房	牆壁： 鋪砌天然石材及不銹鋼於見光處至假天花。  天花板： 裝設鋁質假天花及石膏板假天花，批盪後再髹乳膠漆至見光處。  地板： 鋪砌天然石材至見光處。  灶台檯面物料為天然石材。
3. 室內裝置	
細項	描述
(a) 門	大門 — 選用木皮面配不銹鋼條實心木門配防盜眼、氣鼓、防盜欄、門鎖及按門鈴。  第1座A單位、第3及5座各單位、第7座B單位及第8座A單位後門 — 選用實心木門，選用木皮面配不銹鋼條及膠板面，裝設氣鼓、門鎖及手柄。  睡房門 — 選用木皮配不銹鋼條空心木門，裝設門鎖及手柄。  廚房門 — 選用木皮面配不銹鋼條實心木門並鑲有防火透明玻璃，裝設氣鼓、門鎖及手柄。  浴室門及化妝間門 — 選用木皮面空心木門、向內裝鏡面（第1座B單位化妝間除外），裝設門鎖及手柄，設有百葉（下列浴室及化妝間除外）： 第1座B單位1號浴室 第3座A單位1號浴室 第5座B單位1號浴室 第6座C單位主人浴室 第7座A及B單位1號浴室及化妝間 第8座A及B單位1號浴室及化妝間  洗手間門 — 選用鋁框玻璃摺門。  工作間門及儲物房門 — 選用空心木門，選用木皮及膠板面，裝設門鎖及手柄。

(a) 門	<p>露台門及工作平台門 — 選用鋁框玻璃趟門配門鎖及手柄，下列單位之工作平台除外：第6座A、B及C單位工作平台選用鋁框玻璃門配門鎖及手柄。</p> <p>天台圍牆門 — 金屬閘門配門鎖及手柄。</p> <p>屬單位一部分之電梯大堂之走火門 — 以下單位選用實心木門並鑲有防火透明玻璃，木皮面配不銹鋼飾面及膠板，裝設氣鼓、門鎖及手柄： 第1座B單位 第7座A單位 第8座B單位</p>
(b) 浴室	<p><u>主人浴室、1號浴室、2號浴室及浴室(除第1座A單位2號浴室及第1座B單位2號浴室外)</u> 搪瓷面盆配天然石材檯面及膠板和不銹鋼條飾面木面盆櫃。搪瓷抽水坐廁、鋼板瓷釉浴缸(有關浴缸之尺寸，請參考下文「有關浴缸尺寸之列表」)連鍍鉻浴簾掛桿。配件包括鍍鉻面盆水龍頭、鍍鉻浴缸龍頭、鍍鉻淋浴花灑套裝、鏡、鍍鉻毛巾架、鍍鉻廁紙架及鍍鉻掛衣鉤。</p> <p>各主人浴室設置強化玻璃淋浴間隔及塑膠淋浴桿，以下單位主人浴室除外： 第3座A單位主人浴室 第3座B單位主人浴室 第5座A單位主人浴室 第5座B單位主人浴室 第6座A單位主人浴室 第6座C單位主人浴室</p> <p><u>第1座A單位2號浴室及第1座B單位2號浴室</u> 搪瓷面盆配天然石材檯面及膠板和不銹鋼條飾面木面盆櫃。搪瓷抽水坐廁、強化玻璃淋浴間隔。配件包括鍍鉻面盆水龍頭、鍍鉻淋浴花灑套裝、鏡、鍍鉻毛巾架、鍍鉻廁紙架及鍍鉻掛衣鉤。</p> <p>洗手間 搪瓷抽水坐廁。洗手間配件包括鍍鉻面盆水龍頭連花灑套裝、鏡及鍍鉻廁紙架。</p> <p>供水系統的類型及用料見下文「供水」一欄。</p>
(c) 廚房	<p>選用木製廚櫃，配以木皮及鋁板、天然石檯面、不銹鋼洗滌盆及鍍鉻冷熱水龍頭。廚櫃配鋁腳線及鋁手柄。</p> <p>供水系統的用料見下文「供水」一欄。</p> <p>其他裝置及設備的類型：安裝在開放式廚房(如適用)內的消防裝置及設備 — 消防花灑頭；安裝在開放式廚房(如適用)附近的消防裝置及設備 — 煙霧探測器。</p>
(d) 睡房	沒有
(e) 電話	電話插座之數目及位置，請參考「住宅單位機電裝置數量說明表」。
(f) 天線	電視/電台天線插座之數目及位置，請參考「住宅單位機電裝置數量說明表」。
(g) 電力裝置	客廳/飯廳、睡房、廚房、主人浴室、1號浴室、2號浴室及浴室、儲物房、工作間、平台及天台均裝有電插座。導管部分隱藏、部分外露。所有外露導管均隱藏於假天花、裝飾橫樑或廚櫃內。每戶均裝有總電掣箱及包括漏電保護器。有關電插座、接線電掣及空調機接駁點、抽氣扇開關掣之數目及位置，請參考「住宅單位機電裝置數量說明表」。

(h) 氣體供應	除第6座D及E單位無氣體供應，其他單位供應煤氣。氣體供應之系統及位置，請參考「住宅單位機電裝置數量說明表」。
(i) 洗衣機接駁點	洗衣機接駁點之位置及設計，請參考「住宅單位機電裝置數量說明表」。
(j) 供水	冷熱水喉管全部採用有PVC膠層保護之銅喉。有熱水供應。浴室及廚房之熱水由電爐供應。水管部分隱藏、部分外露。所有外露喉管安裝於假天花、裝飾橫樑或廚櫃內。
4. 雜項	
細項	描述
(a) 升降機	升降機詳情請參閱下文「所有升降機樓層示意圖」。
(b) 信箱	信箱用料為金屬。
(c) 垃圾收集	住宅樓層每層設有垃圾及物料回收室，由清潔工人收集垃圾。地庫1樓及地庫2樓設有垃圾及物料回收房中央處理所收集的垃圾。
(d) 水錶、電錶及氣體錶	<p>每層住宅樓層電錶箱內均裝有每戶專用之獨立電錶。</p> <p>第1、7及8座每戶專用之獨立水錶裝於8樓、10樓、15樓、18樓、20樓、23樓、25樓、28樓、30樓及33樓水錶箱內。</p> <p>第3及5座每戶專用之獨立水錶裝於8樓、10樓、12樓、17樓、21樓、25樓、27樓、28樓、31樓、33樓及37樓水錶箱內。</p> <p>第6座每戶專用之獨立水錶裝於每層住宅樓層水錶箱內。</p> <p>除第6座D及E單位(開放式廚房)外，每戶廚房內均裝獨立煤氣錶。</p>
5. 保安設施	<p>入口大堂及所有電梯內均裝有閉路電視鏡頭，設有八達通卡開啟入口大堂大門。</p> <p>發展項目設有車輛管控系統。</p>

賣方承諾，如發展項目中沒有安裝分別於第4(a)及6細項指明的品牌名稱或產品型號的升降機或設備，便會安裝品質相若的升降機或設備。

備註：第1、7及8座住宅樓層不設13樓、14樓及24樓。第3、5及6座住宅樓層不設13樓、14樓、24樓及34樓。第3及5座19樓為庇護層。

6. 設備

				第1座		第3座		第5座	
				7樓-33樓		7樓-37樓		7樓-37樓	
位置	設備	品牌名稱	產品型號	A單位	B單位	A單位	B單位	A單位	B單位
廚房	煤氣煮食爐	Gaggenau	VG232334SG	✓	✓	✓	✓	✓	✓
			VG231334HK	✓	✓	✓	✓	✓	✓
	電磁爐	Gaggenau	VI230134	✓	✓	✓	✓	✓	✓
	抽油煙機	Gaggenau	AW230120	✓	✓	—	—	—	—
			AW230190	—	—	✓	✓	✓	✓
			AH900191	—	—	—	—	—	—
	微波爐	Gaggenau	BMP224110/ BMP225110	✓	✓	✓	✓	✓	✓
	電蒸爐	Gaggenau	BSP220110/ BSP221110	✓	✓	✓	✓	✓	✓
	電焗爐	Gaggenau	BOP210111/ BOP211111	✓	✓	✓	✓	✓	✓
	蒸焗爐	Gaggenau	BSP250110/ BSP251110	—	—	—	—	—	—
	酒櫃	Gaggenau	RW404261	✓	✓	✓	✓	✓	✓
	雪櫃	Gaggenau	RY492301	✓	✓	—	—	—	—
			RB287203	—	—	✓	✓	✓	✓
	洗衣/乾衣機	Gaggenau	WD200140	✓	✓	✓	✓	✓	✓
	電熱水爐	德國寶	GPI-M8	—	—	—	—	—	—
	抽氣扇	Imasu	MBF125	—	—	✓	—	✓	✓
			MBF150K	—	—	—	—	—	—
			MBF150L	✓	✓	—	✓	—	—
主人浴室	電熱水爐	德國寶	CFX-21	✓	✓	✓	✓	✓	✓
	抽氣扇	Imasu	MBF125	—	—	✓	✓	✓	✓
			MBF150K	✓	✓	—	—	—	—
			MBF150L	—	—	—	—	—	—
	防霧器	HWLEE	HW-HMO-14	✓	✓	✓	✓	✓	✓
1號浴室	電熱水爐	德國寶	CFX-21	✓	✓	✓	✓	✓	✓
	抽氣扇	Imasu	MBF125	—	✓	✓	✓	✓	✓
			MBF150K	—	—	—	—	—	—
			MBF150L	✓	—	—	—	—	—
2號浴室	電熱水爐	德國寶	CFX-21	✓	✓	不適用	不適用	不適用	不適用
	抽氣扇	Imasu	MBF125	✓	—				
			MBF150K	—	—				
			MBF150L	—	✓				
浴室	電熱水爐	德國寶	CFX-21	不適用	不適用	不適用	不適用	不適用	不適用
	抽氣扇	Imasu	MBF125						
			MBF150K						
			MBF150L						
	防霧器	HWLEE	HW-HMO-14						
化妝間	抽氣扇	Imasu	MBF125	不適用	✓	不適用	不適用	不適用	不適用
			MBF150K		—				
			MBF150L		—				
洗手間	抽氣扇	Imasu	MBF125	✓	✓	✓	✓	✓	✓
			MBF150K	—	—	—	—	—	—
			MBF150L	—	—	—	—	—	—



				第1座		第3座		第5座	
				7樓-33樓		7樓-37樓		7樓-37樓	
位置	設備	品牌名稱	產品型號	A單位	B單位	A單位	B單位	A單位	B單位
工作間	電熱水爐	德國寶	CFX-21	✓	✓	✓	✓	✓	✓
儲物房	電熱水爐	德國寶	CFX-21	不適用	不適用	不適用	不適用	不適用	不適用
客廳 / 飯廳	分體式冷氣機	大金	FXAQ25PVE	—	—	—	—	—	—
			FXAQ40PVE	—	—	✓ (7樓-36樓)	—	—	—
			FXAQ50PVE	—	—	✓ (7樓-36樓)	✓ (7樓-36樓)	✓	✓ (7樓-36樓)
			FXAQ63PVE	✓	✓	✓ (只設於 37樓)	✓ (只設於 37樓)	✓ (只設於 37樓)	✓
主人睡房	分體式冷氣機	大金	FXAQ25PVE	—	—	—	—	—	—
			FXAQ40PVE	—	—	✓ (7樓-36樓)	—	—	—
			FXAQ50PVE	✓	✓	✓ (只設於 37樓)	✓ (7樓-36樓)	✓ (7樓-36樓)	✓ (7樓-36樓)
			FXAQ63PVE	—	—	—	✓ (只設於 37樓)	✓ (只設於 37樓)	✓ (只設於 37樓)
1號睡房	分體式冷氣機	大金	FXAQ25PVE	—	—	—	—	—	—
			FXAQ40PVE	✓	✓	✓	—	—	✓
			FXAQ50PVE	—	—	—	✓	✓	—
			FXAQ63PVE	—	—	—	—	—	—
2號睡房	分體式冷氣機	大金	FXAQ25PVE	—	—	—	—	—	—
			FXAQ40PVE	—	—	—	✓	—	—
			FXAQ50PVE	✓	✓	—	—	✓	✓
			FXAQ63PVE	—	—	✓	—	—	—
3號睡房	分體式冷氣機	大金	FXAQ25PVE	—	—	不適用	不適用	不適用	不適用
			FXAQ40PVE	✓	✓				
			FXAQ50PVE	—	—				
			FXAQ63PVE	—	—				

賣方承諾，如發展項目中沒有安裝分別於第4(a)及6細項指明的品牌名稱或產品型號的升降機或設備，便會安裝品質相若的升降機或設備。  
備註：第1、7及8座住宅樓層不設13樓、14樓及24樓。第3、5及6座住宅樓層不設13樓、14樓、24樓及34樓。第3及5座19樓為庇護層。

				第6座					第7座		第8座	
				8樓-37樓					7樓-33樓		7樓-33樓	
位置	設備	品牌名稱	產品型號	A單位	B單位	C單位	D單位	E單位	A單位	B單位	A單位	B單位
廚房	煤氣煮食爐	Gaggenau	VG232334SG	—	—	—	—	—	✓	✓	✓	✓
			VG231334HK	✓	✓	✓	—	—	✓	✓	✓	✓
	電磁爐	Gaggenau	VI230134	✓	✓	✓	✓	✓	✓	✓	✓	✓
	抽油煙機	Gaggenau	AW230120	—	—	—	—	—	✓	✓	✓	✓
			AW230190	—	—	—	✓	✓	—	—	—	—
			AH900191	✓	✓	✓	—	—	—	—	—	—
	微波爐	Gaggenau	BMP224110/ BMP225110	✓	✓	✓	✓	✓	✓	✓	✓	✓
	電蒸爐	Gaggenau	BSP220110/ BSP221110	—	—	—	—	—	✓	✓	✓	✓
	電焗爐	Gaggenau	BOP210111/ BOP211111	—	—	—	—	—	✓	✓	✓	✓
	蒸焗爐	Gaggenau	BSP250110/ BSP251110	✓	✓	✓	✓	✓	—	—	—	—
	酒櫃	Gaggenau	RW404261	—	—	—	—	—	✓	✓	✓	✓
	雪櫃	Gaggenau	RY492301	—	—	—	—	—	✓	✓	✓	✓
			RB287203	✓	✓	✓	✓	✓	—	—	—	—
	洗衣/乾衣機	Gaggenau	WD200140	✓	✓	✓	✓	✓	✓	✓	✓	✓
	電熱水爐	德國寶	GPI-M8	—	✓	✓	✓	✓	—	—	—	—
	抽氣扇	Imasu	MBF125	—	✓	✓	—	—	—	—	—	—
			MBF150K	—	—	—	—	—	✓	✓	—	—
			MBF150L	✓	—	—	✓	✓	—	—	✓	✓
主人浴室	電熱水爐	德國寶	CFX-21	✓	不適用	✓	不適用	不適用	✓	✓	✓	✓
	抽氣扇	Imasu	MBF125	✓		✓			✓	—	—	✓
			MBF150K	—		—			—	✓	—	—
			MBF150L	—		—			—	—	✓	—
	防霧器	HWLEE	HW-HMO-14	✓		✓			✓	✓	✓	✓
1號浴室	電熱水爐	德國寶	CFX-21	✓	不適用	✓	不適用	不適用	✓	✓	✓	✓
	抽氣扇	Imasu	MBF125	✓		✓			✓	—	—	✓
			MBF150K	—		—			—	—	—	—
			MBF150L	—		—			—	✓	✓	—
	防霧器	HWLEE	HW-HMO-14	—		—			—	—	—	—
2號浴室	電熱水爐	德國寶	CFX-21	不適用	不適用	不適用	不適用	不適用	不適用	不適用	不適用	不適用
	抽氣扇	Imasu	MBF125									
			MBF150K									
			MBF150L									
浴室	電熱水爐	德國寶	CFX-21	不適用	✓	不適用	✓	✓	不適用	不適用	不適用	不適用
	抽氣扇	Imasu	MBF125		✓		✓	✓				
			MBF150K		—		—	—				
			MBF150L		—		—	—				
	防霧器	HWLEE	HW-HMO-14		✓		✓	✓				
化妝間	抽氣扇	Imasu	MBF125	不適用	不適用	不適用	不適用	不適用	✓	✓	✓	✓
			MBF150K						—	—	—	—
			MBF150L						—	—	—	—
洗手間	抽氣扇	Imasu	MBF125	✓	不適用	不適用	不適用	不適用	✓	✓	✓	✓
			MBF150K	—					—	—	—	—
			MBF150L	—					—	—	—	—

				第6座					第7座		第8座	
				8樓-37樓					7樓-33樓		7樓-33樓	
位置	設備	品牌名稱	產品型號	A單位	B單位	C單位	D單位	E單位	A單位	B單位	A單位	B單位
工作間	電熱水爐	德國寶	CFX-21	✓	不適用	不適用	不適用	不適用	✓	✓	✓	不適用
儲物房	電熱水爐	德國寶	CFX-21	不適用	不適用	—	不適用	不適用	不適用	不適用	不適用	✓
客廳/飯廳	分體式冷氣機	大金	FXAQ25PVE	—	✓ (8樓-36樓)	—	—	—	—	—	—	—
			FXAQ40PVE	✓ (8樓-36樓)	✓	✓ (8樓-36樓)	✓	✓	✓	✓ (7樓-32樓)	✓ (7樓-32樓)	—
			FXAQ50PVE	✓ (只設於37樓)	—	✓ (只設於37樓)	—	—	✓	✓	✓	✓
			FXAQ63PVE	—	—	—	—	—	—	—	—	—
主人睡房	分體式冷氣機	大金	FXAQ25PVE	—	✓ (8樓-36樓)	—	—	—	—	—	—	—
			FXAQ40PVE	—	✓ (只設於37樓)	—	✓	✓ (8樓-36樓)	—	—	—	—
			FXAQ50PVE	—	—	—	—	✓ (只設於37樓)	—	—	—	✓
			FXAQ63PVE	✓	—	✓	—	—	✓	✓	✓	—
1號睡房	分體式冷氣機	大金	FXAQ25PVE	✓ (8樓-36樓)	✓ (31樓-36樓)	—	—	✓	—	—	—	—
			FXAQ40PVE	✓ (只設於37樓)	✓ (只設於37樓)	✓ (8樓-36樓)	✓	—	—	✓	✓	—
			FXAQ50PVE	—	—	✓ (只設於37樓)	—	—	✓	—	—	✓
			FXAQ63PVE	—	—	—	—	—	—	—	—	—
2號睡房	分體式冷氣機	大金	FXAQ25PVE	✓ (8樓-36樓)	不適用	—	不適用	不適用	—	—	—	—
			FXAQ40PVE	✓ (只設於37樓)		✓ (8樓-36樓)			✓	✓ (7樓-32樓)	—	—
			FXAQ50PVE	—		✓ (只設於37樓)			—	✓ (只設於33樓)	✓	✓
			FXAQ63PVE	—		—			—	—	—	—
3號睡房	分體式冷氣機	大金	FXAQ25PVE	不適用	不適用	不適用	不適用	不適用	—	—	—	—
			FXAQ40PVE						—	✓ (7樓-32樓)	—	✓ (7樓-32樓)
			FXAQ50PVE						—	✓ (只設於33樓)	✓	✓ (只設於33樓)
			FXAQ63PVE						✓	—	—	—

賣方承諾，如發展項目中沒有安裝分別於第4(a)及6細項指明的品牌名稱或產品型號的升降機或設備，便會安裝品質相若的升降機或設備。  
備註：第1、7及8座住宅樓層不設13樓、14樓及24樓。第3、5及6座住宅樓層不設13樓、14樓、24樓及34樓。第3及5座19樓為庇護層。



有關浴缸尺寸之列表

座數	單位	浴室	1800毫米(長) x 750毫米 (闊) x 460毫米 (深)	1600毫米(長) x 750毫米 (闊) x 420毫米 (深)	1500毫米(長) x 700毫米 (闊) x 420毫米 (深)
第1座	A	主人浴室	✓	—	—
		1號浴室	—	✓	—
		2號浴室	—	—	—
	B	主人浴室	✓	—	—
		1號浴室	✓	—	—
		2號浴室	—	—	—
第3座	A	主人浴室	✓	—	—
		1號浴室	✓	—	—
	B	主人浴室	✓	—	—
		1號浴室	✓	—	—
第5座	A	主人浴室	✓	—	—
		1號浴室	✓	—	—
	B	主人浴室	✓	—	—
		1號浴室	✓	—	—
第6座	A	主人浴室	✓	—	—
		1號浴室	✓	—	—
	B	浴室	—	—	✓
	C	主人浴室	✓	—	—
		1號浴室	✓	—	—
	D	浴室	✓	—	—
	E	浴室	✓	—	—
第7座	A	主人浴室	✓	—	—
		1號浴室	✓	—	—
	B	主人浴室	✓	—	—
		1號浴室	✓	—	—
第8座	A	主人浴室	✓	—	—
		1號浴室	✓	—	—
	B	主人浴室	✓	—	—
		1號浴室	✓	—	—

所有升降機之樓層示意圖

樓層		第1座		第3座		第5座		第6座		第7座	
	品牌	迅達升降機									
	型號	Schindler 7000	5500 MMR	Schindler 7000				5500 MMR		Schindler 7000	5500 MMR
	升降機編號	L1-L2	L3	L4	L5	L6	L7	L8	L9	L10-L11	L12
	升降機數目	2	1	1	1	1	1	1	1	2	1
39											
38											
37				✓	✓	✓	✓	✓	✓		
36				✓	✓	✓	✓	✓	✓		
35				✓	✓	✓	✓	✓	✓		
33		✓	✓	✓	✓	✓	✓	✓	✓	✓	✓
32		✓	✓	✓	✓	✓	✓	✓	✓	✓	✓
31		✓	✓	✓	✓	✓	✓	✓	✓	✓	✓
30		✓	✓	✓	✓	✓	✓	✓	✓	✓	✓
29		✓	✓	✓	✓	✓	✓	✓	✓	✓	✓
28		✓	✓	✓	✓	✓	✓	✓	✓	✓	✓
27		✓	✓	✓	✓	✓	✓	✓	✓	✓	✓
26		✓	✓	✓	✓	✓	✓	✓	✓	✓	✓
25		✓	✓	✓	✓	✓	✓	✓	✓	✓	✓
23		✓	✓	✓	✓	✓	✓	✓	✓	✓	✓
22		✓	✓	✓	✓	✓	✓	✓	✓	✓	✓
21		✓	✓	✓	✓	✓	✓	✓	✓	✓	✓
20		✓	✓	✓	✓	✓	✓	✓	✓	✓	✓
19		✓	✓	✓*	—	✓*	—	✓	✓	✓	✓
18		✓	✓	✓	✓	✓	✓	✓	✓	✓	✓
17		✓	✓	✓	✓	✓	✓	✓	✓	✓	✓
16		✓	✓	✓	✓	✓	✓	✓	✓	✓	✓
15		✓	✓	✓	✓	✓	✓	✓	✓	✓	✓
12		✓	✓	✓	✓	✓	✓	✓	✓	✓	✓
11		✓	✓	✓	✓	✓	✓	✓	✓	✓	✓
10		✓	✓	✓	✓	✓	✓	✓	✓	✓	✓
9		✓	✓	✓	✓	✓	✓	✓	✓	✓	✓
8		✓	✓	✓	✓	✓	✓	✓	✓	✓	✓
7		✓	✓	✓	✓	✓	✓	—	—	✓	✓
6		—	—	—	—	—	—	—	—	—	—
5		—	—	—	—	—	—	—	—	—	—
3		—	—	—	—	—	—	—	—	—	—
2		—	—	—	—	—	—	—	—	—	—
1		—	—	—	—	—	—	—	—	—	—
地下		✓	✓	✓	✓	✓	✓	✓	✓	✓	✓
地庫1樓		—	—	✓	—	—	—	—	—	—	—
地庫2樓		✓	✓	✓	✓	✓	✓	✓	✓	✓	✓
地庫3樓		✓	✓	✓	✓	✓	✓	✓	✓	✓	✓
地庫4樓				✓	✓	✓	✓	✓	✓		

✓ = 升降機門開啟  
 — = 沒有升降機門開啟  
 ✓\*= 當消防掣由消防員控制時，升降機門開啟

所有升降機之樓層示意圖

樓層		第8座		酒店 (第2座)						
	品牌	迅達升降機								
	型號	Schindler 7000	5500 MMR	Schindler 7000					5500 MMR	5500 MRL
	升降機編號	L13-L14	L15	L18	L19	L20	L21	L22	L23	L24
	升降機數目	2	1	1	1	1	1	1	1	1
39				✓	✓	✓	✓	✓	✓	
38				✓	✓	✓	✓	✓	✓	
37				✓	✓	✓	✓	✓	✓	
36				✓	✓	✓	✓	✓	✓	
35				✓	✓	✓	✓	✓	✓	
33		✓	✓	✓	✓	✓	✓	✓	✓	
32		✓	✓	✓	✓	✓	✓	✓	✓	
31		✓	✓	✓	✓	✓	✓	✓	✓	
30		✓	✓	✓	✓	✓	✓	✓	✓	
29		✓	✓	✓	✓	✓	✓	✓	✓	
28		✓	✓	✓	✓	✓	✓	✓	✓	
27		✓	✓	✓	✓	✓	✓	✓	✓	
26		✓	✓	✓	✓	✓	✓	✓	✓	
25		✓	✓	✓	✓	✓	✓	✓	✓	
23		✓	✓	✓	✓	✓	✓	✓	✓	
22		✓	✓	✓	✓	✓	✓	✓	✓	
21		✓	✓	✓	✓	✓	✓	✓	✓	
20		✓	✓	✓	✓	✓	✓	✓	✓	
19		✓	✓	✓	✓	✓	✓	✓	✓	
18		✓	✓	✓	✓	✓	✓	✓	✓	
17		✓	✓	✓	✓	✓	✓	✓	✓	
16		✓	✓	✓	✓	✓	✓	✓	✓	
15		✓	✓	✓	✓	✓	✓	✓	✓	
12		✓	✓	✓	✓	✓	✓	✓	✓	
11		✓	✓	✓	✓	✓	✓	✓	✓	
10		✓	✓	✓	✓	✓	✓	✓	✓	
9		✓	✓	✓	✓	✓	✓	✓	✓	
8		✓	✓	✓	✓	✓	✓	✓	✓	
7		✓	✓	✓	✓	✓	✓	✓	✓	
6		—	—	✓	✓	✓	✓	✓	✓	✓
5		—	—	✓	✓	✓	✓	✓	✓	✓
3		—	—	✓	✓	✓	✓	✓	✓	✓
2		—	—	✓	✓	✓	✓	✓	✓	✓
1		—	—	✓	✓	✓	✓	✓	✓	✓
地下		✓	✓	—	—	—	—	✓	—	—
地庫1樓		—	—	✓	✓	✓	✓	✓	✓	✓
地庫2樓		✓	✓		✓	✓	✓	✓	✓	✓
地庫3樓		✓	✓							
地庫4樓										

✓ = 升降機門開啟  
— = 沒有升降機門開啟  
✓\*= 當消防掣由消防員控制時，升降機門開啟



所有升降機之樓層示意圖

樓層		酒店西翼低層		酒店東翼低層			基座					
	品牌	迅達升降機										
	型號	5500 MRL		5500 MRL			5500 MRL			5400 MRL	5500 MRL	
	升降機編號	L16	L17	L25	L26	L27	L28	L29	L30	L31	L32	L33
	升降機數目	1	1	1	1	1	1	1	1	1	1	1
39												
38												
37												
36												
35												
33												
32												
31												
30												
29												
28												
27												
26												
25												
23												
22												
21												
20												
19												
18												
17												
16												
15												
12												
11												
10												
9												
8												
7				✓	✓	✓						
6		✓	✓	✓	✓	✓						
5		✓	✓	✓	✓	✓						
3		✓	✓	✓	✓	✓						
2		✓	✓	✓	✓	✓						
1		✓	✓	✓	✓	✓					✓	
地下		—	—	✓	—	—	✓	✓	✓		✓	
地庫1樓		✓	✓	✓	✓	✓	—	✓	✓	✓		✓
地庫2樓		✓		✓			✓	—		✓		✓
地庫3樓		✓		✓								
地庫4樓				✓								

✓ = 升降機門開啟  
— = 沒有升降機門開啟  
✓\*= 當消防掣由消防員控制時，升降機門開啟

1. Exterior finishes	
Item	Description
(a) External wall	<p>Residential towers and hotel tower finished with external wall tiles, aluminium cladding, glass, natural stone and curtain wall.</p> <p>Hotel Portion under residential towers finished with natural stone, external wall tiles, glass, aluminium cladding, glass wall and curtain wall.</p>
(b) Window	<p>Windows are provided with aluminium frames with PVF2 coating.</p> <p>All windows of living rooms / dining rooms, bedrooms, kitchens and utility rooms are provided with clear tempered glass except for the following kitchens, utility rooms and bathrooms.</p> <p>The following kitchens are provided with double sided acid etched tempered glass:-</p> <ul style="list-style-type: none"><li>- Tower 3 Units B</li><li>- Tower 5 Units B</li><li>- Tower 6 Units D and Units E</li><li>- Tower 7 Units B</li><li>- Tower 8 Units A</li></ul> <p>The following utility rooms are provided with double sided acid etched glass:-</p> <ul style="list-style-type: none"><li>- Tower 5 Units A and Tower 6 Units A</li></ul> <p>All bathrooms are provided with double sided acid etched tempered glass.</p>
(c) Bay window	Not applicable.
(d) Planter	Not applicable.
(e) Verandah or balcony	<p>Walls: Natural stone, aluminium cladding, tempered glass and metal balustrade.</p> <p>Ceilings: Tower 6 Units A, C, D and E: Aluminium strips ceiling below soffit with external paint on plaster. Other units: external paint on plaster.</p> <p>Floors: Finished with natural stone.</p> <p>All balconies are covered.</p> <p>No verandah is provided.</p>
(f) Drying facilities for clothing	Nil
2. Interior finishes	
Item	Description
(a) Lobby	<p>Residential Main Entrance Lobby: Walls finished with natural stone, decorative mirror and stainless steel to exposed surface. Floors finished with natural stone to exposed surface. Ceilings finished with suspended false ceiling of gypsum board and stainless steel trimming to exposed surface.</p> <p>Typical residential lift lobby in all Towers and firemen's lift lobby in Towers 3 and 5: Each lobby's walls finished with natural stone, timber veneer, vinly and stainless steel to exposed surface. Natural stone for floor to exposed surface. Ceilings finished with suspended false ceiling of gypsum board with emulsion paint to exposed surface and stainless steel trimming, timber strips and wall coverings to exposed surface. Suspended aluminium ceiling strips applied on Tower 6 typical lift lobby.</p>

(a) Lobby	Typical firemen's lift lobby in Towers 1, 7 and 8: Each lobby's walls finished with ceramic tiles to exposed surface. Flooring finished with homogeneous tile to exposed surface. Ceiling finished with suspended false ceiling of gypsum board with emulsion paint on plastering to exposed surface.
(b) Internal wall and ceiling	<p>Walls: Living rooms / dining rooms and Bedrooms - Plaster with emulsion paint to exposed surface.</p> <p>Ceilings: Living rooms / dining rooms and Bedrooms - Emulsion paint on plaster to exposed surface, suspended false ceiling of gypsum board with emulsion paint.</p>
(c) Internal floor	Living rooms / dining rooms and Bedrooms - Timber flooring, timber skirting and natural stone floor borders next to balcony door (if provided) and utility platform door (if provided).
(d) Bathroom	<p>Walls: All bathrooms: Natural stone, stainless steel and mirror on exposed surfaces up to false ceiling level.</p> <p>Lavatory: Ceramic tiles on exposed surfaces up to false ceiling level.</p> <p>Ceilings: All bathrooms and lavatory: Aluminium false ceiling to exposed surface.</p> <p>Floors: All bathrooms: Natural stone to exposed surfaces.</p> <p>Lavatory: Homogeneous tiles to exposed surfaces.</p>
(e) Kitchen	<p>Walls: Natural stone and stainless steel on exposed surfaces up to false ceiling level.</p> <p>Ceilings: Suspended false ceiling with aluminium panels and gypsum board with emulsion paint on plastering to exposed surface.</p> <p>Floors: Natural stone to exposed surfaces.</p> <p>Cooking bench finished with natural stone.</p>
3. Interior fittings	
Item	Description
(a) Doors	<p>Entrance Door - Timber veneer with stainless steel trimming finished timber solid core door fitted with door viewer, door closer, door guard, lockset and door bell button.</p> <p>Back Door of Tower 1 Units A, all units of Towers 3 and 5, Tower 7 Units B and Tower 8 Units A - Timber solid core door fitted with timber veneer with stainless steel trimming finish and plastic laminate finish with door closer, lockset and handle.</p> <p>Bedroom Doors - Timber veneer with stainless steel trimming finished timber hollow core door with lockset and handle.</p> <p>Kitchen Door - Timber veneer with stainless steel trimming finished timber solid core door and fitted with fire-rated glass panel, door closer, lockset and handle.</p>

(a) Doors	<p>Bathroom and Powder Room - Timber veneer finished timber hollow core door, with mirror (except for Tower 1 Units B Powder Room) and fitted with lockset and handle, and with louver except for the following units: Tower 1 Units B Bathroom 1 Tower 3 Units A Bathroom 1 Tower 5 Units B Bathroom 1 Tower 6 Units C Master Bathroom Tower 7 Units A and B Bathroom 1 and Powder Room Tower 8 Units A and B Bathroom 1 and Powder Room</p> <p>Lavatory Door - Aluminium folding glass door.</p> <p>Utility Room Door and Store Room Door - Timer hollow core door fitted with timber veneer finish and plastic laminate finish with lockset and handle.</p> <p>Balcony Door and Utility Platform Door - Aluminium framed glass sliding door fitted with handle and lock, except the following flats: Utility Platform of all Tower 6 Units A, B and C - aluminium framed glass door with handle and lock.</p> <p>Roof Gate of Parapet Wall - Metal Gate with lockset and handle.</p> <p>Exit Door of Lift Lobby forming part of a Unit - Timer solid core door and fire-rated door glass with timber veneer and stainless steel finish and plastic laminate fitted with door closer, lockset and handle for the following units:- Tower 1 Units B Tower 7 Units A Tower 8 Units B</p>
(b) Bathroom	<p><u>Master Bathrooms, Bathrooms 1, Bathrooms 2 and Bathrooms (Except for Tower 1 Units A Bathroom 2 and Tower 1 Units B Bathroom 2)</u></p> <p>Vitreous china wash basin with natural stone counter top, plastic laminate and stainless steel finished timber basin cabinet. Flushing vitreous china water closet. Enameled pressed steel bathtub (Please refer to “Table for the size of bathtub” below for the size of bathtub) with chrome finished shower curtain rail. Accessories including chrome finished basin mixer, chrome finished bath mixer, chrome finished shower set, mirror, chrome finished towel rack, chrome finished paper holder and chrome finished robe hook are provided.</p> <p>Plastic shower panel, tempered glass shower cubicle are provided in master bathrooms except the master bathrooms of the following units:- Tower 3 Units A master bathrooms Tower 3 Units B master bathrooms Tower 5 Units A master bathrooms Tower 5 Units B master bathrooms Tower 6 Units A master bathrooms Tower 6 Units C master bathrooms</p> <p><u>Tower 1 Units A Bathroom 2 and Tower 1 Units B Bathroom 2</u></p> <p>Vitreous china wash basin with natural stone counter top, plastic laminate and stainless steel finished timber basin cabinet. Flushing vitreous china water closet. Tempered glass shower cubicle. Accessories including chrome finished basin mixer, chrome finished shower set, mirror, chrome finished towel</p>

(b) Bathroom	<p>rack, chrome finished paper holder and chrome finished robe hook are provided.</p> <p><u>Lavatory</u> Flushing vitreous china water closet. Accessories including chrome finished basin mixer with shower set, mirror and chrome finished paper holder are provided. See “Water supply” below for type and material of water supply system.</p>
(c) Kitchen	<p>Wooden kitchen cabinet completed with timber veneer and aluminium finish. Natural stone counter top and stainless steel sink with chrome finished hot and cold water faucet. Kitchen cabinet with aluminium skirting and aluminium handle.</p> <p>See “Water supply” below for material of water supply system.</p> <p>Type of other fittings and equipment: fire service installations and equipment fitted in open kitchen (if applicable) - Fire Services Sprinkler Heads; fire service installations and equipment fitted near open kitchen (if applicable) - Smoke Detector.</p>
(d) Bedroom	Nil.
(e) Telephone	For the number and the location of telephone outlets points, please refer to the “Schedule of Mechanical & Electrical Provisions of Residential Units”.
(f) Aerials	For the number and the location of TV/FM outlets, please refer to the “Schedule of Mechanical & Electrical Provisions of Residential Units”.
(g) Electrical installations	<p>Socket outlets are provided in all living rooms / dining rooms, bedrooms, kitchens, master bathrooms, bathrooms 1, bathrooms 2 and bathrooms, store rooms, utility rooms, flat roofs and roofs. Conduits are concealed in part and exposed in part. All exposed conduits are enclosed in false ceilings, bulkheads or kitchen cabinets. MCB board complete with Residual Current Protection is provided for each unit. For the number and the location of socket outlets, fused connection unit, air conditioner points and switch for exhaust air fan, please refer to the “Schedule of Mechanical &amp; Electrical Provisions of Residential Units”.</p>
(h) Gas supply	Tower 6 Units D and E have no gas supply. All other units are supplied with town gas. Please refer to the “Schedule of Mechanical & Electrical Provisions of Residential Units” for the system and location of gas supply.
(i) Washing machine connection point	Please refer to the “Schedule of Mechanical & Electrical Provisions of Residential Units” for the location and design of the washing machine connection points.
(j) Water supply	PVC-coated copper pipes are provided for both hot and cold water. Hot water is available. Hot water supply to bathroom and kitchen is provided by electric water heater. Water pipes are concealed in part and exposed in part. All exposed pipeworks are enclosed in false ceilings, bulkhead or kitchen cabinets.
<b>4. Miscellaneous</b>	
Item	Description
(a) Lifts	Please refer to “Floor Schematic for All Lifts” below for the details of lifts.
(b) Letter box	The material of the letter box is metal.
(c) Refuse collection	Refuse Storage and Material Recovery Room is provided at each residential floor for collection of refuse by cleaners. Collected refuse is centrally handled at the Refuse Storage and Material Recovery Chamber located on Basement 1 and Basement 2.

(d) Water meter, electricity meter and gas meter	<p>Separate meters for electricity are provided at electricity meter cabinets of each residential floor.</p> <p>For Towers 1, 7 and 8, separate meters for potable water are provided at 8/F, 10/F, 15/F, 18/F, 20/F, 23/F, 25/F, 28/F, 30/F and 33/F Water Meter Cabinet.</p> <p>For Towers 3 and 5, separate meters for potable water are provided at 8/F, 10/F, 12/F, 17/F, 21/F, 25/F, 27/F, 28/F, 31/F, 33/F and 37/F Water Meter Cabinet.</p> <p>For Tower 6, separate meters for potable water are provided at Water Meter Cabinet of each residential floor.</p> <p>Separate town gas meter is provided in the kitchen of each unit except Tower 6 Units D &amp; E (Open Kitchen).</p>
5. Security facilities	<p>C.C.T.V. cameras are provided for main entrance lobby and all lift cars. Octopus card for main entrance lobby access control.</p> <p>Vehicular control system is installed at the Development.</p>

The Vendor hereby undertakes that if lifts or appliances of the specified brand name or model number as stated respectively in items 4(a) and 6 are not installed in the development, lifts or appliances of comparable quality will be installed.

Remark: Residential floors 13/F, 14/F and 24/F of Towers 1, 7 and 8 are omitted. Residential floors 13/F, 14/F, 24/F and 34/F of Towers 3, 5 and 6 are omitted. 19/F of Towers 3 and 5 is refuge floor.



## 6. Appliances

				Tower 1		Tower 3		Tower 5	
				7/F-33/F		7/F-37/F		7/F-37/F	
Location	Item	Brand Name	Model number	Flat A	Flat B	Flat A	Flat B	Flat A	Flat B
Kitchen	Gas hob	Gaggenau	VG232334SG	✓	✓	✓	✓	✓	✓
			VG231334HK	✓	✓	✓	✓	✓	✓
	Induction cooker	Gaggenau	VI230134	✓	✓	✓	✓	✓	✓
	Cooker hood	Gaggenau	AW230120	✓	✓	–	–	–	–
			AW230190	–	–	✓	✓	✓	✓
			AH900191	–	–	–	–	–	–
	Microwave oven	Gaggenau	BMP224110/ BMP225110	✓	✓	✓	✓	✓	✓
	Steamer	Gaggenau	BSP220110/ BSP221110	✓	✓	✓	✓	✓	✓
	Electric oven	Gaggenau	BOP210111/ BOP211111	✓	✓	✓	✓	✓	✓
	Steam oven	Gaggenau	BSP250110/ BSP251110	–	–	–	–	–	–
	Wine cellar	Gaggenau	RW404261	✓	✓	✓	✓	✓	✓
	Refrigerator	Gaggenau	RY492301	✓	✓	–	–	–	–
			RB287203	–	–	✓	✓	✓	✓
	Washer/ dryer	Gaggenau	WD200140	✓	✓	✓	✓	✓	✓
	Electric water heater	German Pool	GPI-M8	–	–	–	–	–	–
	Exhaust fan	Imasu	MBF125	–	–	✓	–	✓	✓
			MBF150K	–	–	–	–	–	–
			MBF150L	✓	✓	–	✓	–	–
Master Bathroom	Electric water heater	German Pool	CFX-21	✓	✓	✓	✓	✓	✓
	Exhaust fan	Imasu	MBF125	–	–	✓	✓	✓	✓
			MBF150K	✓	✓	–	–	–	–
			MBF150L	–	–	–	–	–	–
	Fog free mirror	HWLEE	HW-HMO-14	✓	✓	✓	✓	✓	✓
Bathroom 1	Electric water heater	German Pool	CFX-21	✓	✓	✓	✓	✓	✓
	Exhaust fan	Imasu	MBF125	–	✓	✓	✓	✓	✓
			MBF150K	–	–	–	–	–	–
			MBF150L	✓	–	–	–	–	–
Bathroom 2	Electric water heater	German Pool	CFX-21	✓	✓	N/A	N/A	N/A	N/A
	Exhaust fan	Imasu	MBF125	✓	–				
			MBF150K	–	–				
			MBF150L	–	✓				
Bathroom	Electric water heater	German Pool	CFX-21	N/A	N/A	N/A	N/A	N/A	N/A
	Exhaust fan	Imasu	MBF125						
			MBF150K						
			MBF150L						
	Fog free mirror	HWLEE	HW-HMO-14						
Powder Room	Exhaust fan	Imasu	MBF125	N/A	✓	N/A	N/A	N/A	N/A
			MBF150K		–				
			MBF150L		–				
Lavatory	Exhaust fan	Imasu	MBF125	✓	✓	✓	✓	✓	✓
			MBF150K	–	–	–	–	–	–
			MBF150L	–	–	–	–	–	–

				Tower 1		Tower 3		Tower 5	
				7/F-33/F		7/F-37/F		7/F-37/F	
Location	Item	Brand Name	Model number	Flat A	Flat B	Flat A	Flat B	Flat A	Flat B
Utility Room	Electric water heater	German Pool	CFX-21	✓	✓	✓	✓	✓	✓
Store Room	Electric water heater	German Pool	CFX-21	N/A	N/A	N/A	N/A	N/A	N/A
Liv/Din	VRV type A/C unit	Daikin	FXAQ25PVE	–	–	–	–	–	–
			FXAQ40PVE	–	–	✓ (7/F–36/F)	–	–	–
			FXAQ50PVE	–	–	✓ (7/F–36/F)	✓ (7/F–36/F)	✓	✓ (7/F–36/F)
			FXAQ63PVE	✓	✓	✓ (37/F only)	✓ (37/F only)	✓ (37/F only)	✓
Master Bedroom	VRV type A/C unit	Daikin	FXAQ25PVE	–	–	–	–	–	–
			FXAQ40PVE	–	–	✓ (7/F–36/F)	–	–	–
			FXAQ50PVE	✓	✓	✓ (37/F only)	✓ (7/F–36/F)	✓ (7/F–36/F)	✓ (7/F–36/F)
			FXAQ63PVE	–	–	–	✓ (37/F only)	✓ (37/F only)	✓ (37/F only)
Bedroom 1	VRV type A/C unit	Daikin	FXAQ25PVE	–	–	–	–	–	–
			FXAQ40PVE	✓	✓	✓	–	–	✓
			FXAQ50PVE	–	–	–	✓	✓	–
			FXAQ63PVE	–	–	–	–	–	–
Bedroom 2	VRV type A/C unit	Daikin	FXAQ25PVE	–	–	–	–	–	–
			FXAQ40PVE	–	–	–	✓	–	–
			FXAQ50PVE	✓	✓	–	–	✓	✓
			FXAQ63PVE	–	–	✓	–	–	–
Bedroom 3	VRV type A/C unit	Daikin	FXAQ25PVE	–	–	N/A	N/A	N/A	N/A
			FXAQ40PVE	✓	✓				
			FXAQ50PVE	–	–				
			FXAQ63PVE	–	–				

The Vendor hereby undertakes that if lifts or appliances of the specified brand name or model number as stated respectively in items 4(a) and 6 are not installed in the development, lifts or appliances of comparable quality will be installed.

Remark: Residential floors 13/F, 14/F and 24/F of Towers 1, 7 and 8 are omitted. Residential floors 13/F, 14/F, 24/F and 34/F of Towers 3, 5 and 6 are omitted. 19/F of Towers 3 and 5 is refuge floor.

				Tower 6					Tower 7		Tower 8	
				8/F-37/F					7/F-33/F		7/F-33/F	
Location	Item	Brand Name	Model number	Flat A	Flat B	Flat C	Flat D	Flat E	Flat A	Flat B	Flat A	Flat B
Kitchen	Gas hob	Gaggenau	VG232334SG	–	–	–	–	–	✓	✓	✓	✓
			VG231334HK	✓	✓	✓	–	–	✓	✓	✓	✓
	Induction cooker	Gaggenau	VI230134	✓	✓	✓	✓	✓	✓	✓	✓	✓
	Cooker hood	Gaggenau	AW230120	–	–	–	–	–	✓	✓	✓	✓
			AW230190	–	–	–	✓	✓	–	–	–	–
			AH900191	✓	✓	✓	–	–	–	–	–	–
	Microwave oven	Gaggenau	BMP224110/ BMP225110	✓	✓	✓	✓	✓	✓	✓	✓	✓
	Steamer	Gaggenau	BSP220110/ BSP221110	–	–	–	–	–	✓	✓	✓	✓
	Electric oven	Gaggenau	BOP210111/ BOP211111	–	–	–	–	–	✓	✓	✓	✓
	Steam oven	Gaggenau	BSP250110/ BSP251110	✓	✓	✓	✓	✓	–	–	–	–
	Wine cellar	Gaggenau	RW404261	–	–	–	–	–	✓	✓	✓	✓
	Refrigerator	Gaggenau	RY492301	–	–	–	–	–	✓	✓	✓	✓
			RB287203	✓	✓	✓	✓	✓	–	–	–	–
	Washer/ dryer	Gaggenau	WD200140	✓	✓	✓	✓	✓	✓	✓	✓	✓
	Electric water heater	German Pool	GPI-M8	–	✓	✓	✓	✓	–	–	–	–
	Exhaust fan	Imasu	MBF125	–	✓	✓	–	–	–	–	–	–
			MBF150K	–	–	–	–	–	✓	✓	–	–
			MBF150L	✓	–	–	✓	✓	–	–	✓	✓
Master Bathroom	Electric water heater	German Pool	CFX-21	✓	N/A	✓	N/A	N/A	✓	✓	✓	✓
	Exhaust fan	Imasu	MBF125	✓		✓			✓	–	–	✓
			MBF150K	–		–			–	✓	–	–
			MBF150L	–		–			–	–	✓	–
	Fog free mirror	HWLEE	HW-HMO-14	✓		✓			✓	✓	✓	✓
Bathroom 1	Electric water heater	German Pool	CFX-21	✓	N/A	✓	N/A	N/A	✓	✓	✓	✓
	Exhaust fan	Imasu	MBF125	✓		✓			✓	–	–	✓
			MBF150K	–		–			–	–	–	–
			MBF150L	–		–			–	✓	✓	–
	Fog free mirror	HWLEE	HW-HMO-14	–		–			–	–	–	–
Bathroom 2	Electric water heater	German Pool	CFX-21	N/A	N/A	N/A	N/A	N/A	N/A	N/A	N/A	N/A
	Exhaust fan	Imasu	MBF125									
			MBF150K									
			MBF150L									
Bathroom	Electric water heater	German Pool	CFX-21	N/A	✓	N/A	✓	✓	N/A	N/A	N/A	N/A
	Exhaust fan	Imasu	MBF125		✓		✓	✓				
			MBF150K		–		–	–				
			MBF150L		–		–	–				
	Fog free mirror	HWLEE	HW-HMO-14		✓		✓	✓				
Powder Room	Exhaust fan	Imasu	MBF125	N/A	N/A	N/A	N/A	N/A	✓	✓	✓	✓
			MBF150K						–	–	–	–
			MBF150L						–	–	–	–
Lavatory	Exhaust fan	Imasu	MBF125	✓	N/A	N/A	N/A	N/A	✓	✓	✓	✓
			MBF150K	–					–	–	–	–
			MBF150L	–					–	–	–	–

				Tower 6					Tower 7		Tower 8	
				8/F-37/F					7/F-33/F		7/F-33/F	
Location	Item	Brand Name	Model number	Flat A	Flat B	Flat C	Flat D	Flat E	Flat A	Flat B	Flat A	Flat B
Utility Room	Electric water heater	German Pool	CFX-21	✓	N/A	N/A	N/A	N/A	✓	✓	✓	N/A
Store Room	Electric water heater	German Pool	CFX-21	N/A	N/A	–	N/A	N/A	N/A	N/A	N/A	✓
Liv/Din	VRV type A/C unit	Daikin	FXAQ25PVE	–	✓ (8/F–36/F)	–	–	–	–	–	–	–
			FXAQ40PVE	✓ (8/F–36/F)	✓	✓ (8/F–36/F)	✓	✓	✓	✓ (7/F–32/F)	✓ (7/F–32/F)	–
			FXAQ50PVE	✓ (37/F only)	–	✓ (37/F only)	–	–	✓	✓	✓	✓
			FXAQ63PVE	–	–	–	–	–	–	–	–	–
Master Bedroom	VRV type A/C unit	Daikin	FXAQ25PVE	–	✓ (8/F–36/F)	–	–	–	–	–	–	–
			FXAQ40PVE	–	✓ (37/F only)	–	✓	✓ (8/F–36/F)	–	–	–	–
			FXAQ50PVE	–	–	–	–	✓ (37/F only)	–	–	–	✓
			FXAQ63PVE	✓	–	✓	–	–	✓	✓	✓	–
Bedroom 1	VRV type A/C unit	Daikin	FXAQ25PVE	✓ (8/F–36/F)	✓ (31/F–36/F only)	–	–	✓	–	–	–	–
			FXAQ40PVE	✓ (37/F only)	✓ (37/F only)	✓ (8/F–36/F)	✓	–	–	✓	✓	–
			FXAQ50PVE	–	–	✓ (37/F only)	–	–	✓	–	–	✓
			FXAQ63PVE	–	–	–	–	–	–	–	–	–
Bedroom 2	VRV type A/C unit	Daikin	FXAQ25PVE	✓ (8/F–36/F)	N/A	–	N/A	N/A	–	–	–	–
			FXAQ40PVE	✓ (37/F only)		✓ (8/F–36/F)			✓	✓ (7/F–32/F)	–	–
			FXAQ50PVE	–		✓ (37/F only)			–	✓ (33/F only)	✓	✓
			FXAQ63PVE	–		–			–	–	–	–
Bedroom 3	VRV type A/C unit	Daikin	FXAQ25PVE	N/A	N/A	N/A	N/A	N/A	–	–	–	–
			FXAQ40PVE						–	✓ (7/F–32/F)	–	✓ (7/F–32/F)
			FXAQ50PVE						–	✓ (33/F only)	✓	✓ (33/F only)
			FXAQ63PVE						✓	–	–	–

The Vendor hereby undertakes that if lifts or appliances of the specified brand name or model number as stated respectively in items 4(a) and 6 are not installed in the development, lifts or appliances of comparable quality will be installed.

Remark: Residential floors 13/F, 14/F and 24/F of Towers 1, 7 and 8 are omitted. Residential floors 13/F, 14/F, 24/F and 34/F of Towers 3, 5 and 6 are omitted. 19/F of Towers 3 and 5 is refuge floor.



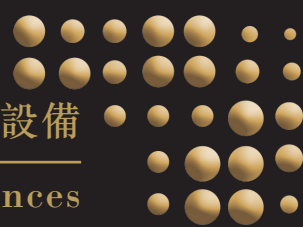


Table for the size of bathtub

Tower	Unit	Bathroom	1800mm(L) x 750mm (W) x 460mm (D)	1600mm(L) x 750mm (W) x 420mm (D)	1500mm(L) x 700mm (W) x 420mm (D)
Tower 1	A	Master Bathroom	✓	–	–
		Bathroom 1	–	✓	–
		Bathroom 2	–	–	–
	B	Master Bathroom	✓	–	–
		Bathroom 1	✓	–	–
		Bathroom 2	–	–	–
Tower 3	A	Master Bathroom	✓	–	–
		Bathroom 1	✓	–	–
	B	Master Bathroom	✓	–	–
		Bathroom 1	✓	–	–
Tower 5	A	Master Bathroom	✓	–	–
		Bathroom 1	✓	–	–
	B	Master Bathroom	✓	–	–
		Bathroom 1	✓	–	–
Tower 6	A	Master Bathroom	✓	–	–
		Bathroom 1	✓	–	–
	B	Bathroom	–	–	✓
	C	Master Bathroom	✓	–	–
		Bathroom 1	✓	–	–
	D	Bathroom	✓	–	–
	E	Bathroom	✓	–	–
Tower 7	A	Master Bathroom	✓	–	–
		Bathroom 1	✓	–	–
	B	Master Bathroom	✓	–	–
		Bathroom 1	✓	–	–
Tower 8	A	Master Bathroom	✓	–	–
		Bathroom 1	✓	–	–
	B	Master Bathroom	✓	–	–
		Bathroom 1	✓	–	–



Floor Schematic for All Lifts

Floor		Tower 1		Tower 3		Tower 5		Tower 6		Tower 7	
	Brand	Schindler Elevator									
	Model No.	Schindler 7000	5500 MMR	Schindler 7000				5500 MMR		Schindler 7000	5500 MMR
	Lift No.	L1-L2	L3	L4	L5	L6	L7	L8	L9	L10-L11	L12
	Number of Lift	2	1	1	1	1	1	1	1	2	1
39											
38											
37				✓	✓	✓	✓	✓	✓		
36				✓	✓	✓	✓	✓	✓		
35				✓	✓	✓	✓	✓	✓		
33		✓	✓	✓	✓	✓	✓	✓	✓	✓	✓
32		✓	✓	✓	✓	✓	✓	✓	✓	✓	✓
31		✓	✓	✓	✓	✓	✓	✓	✓	✓	✓
30		✓	✓	✓	✓	✓	✓	✓	✓	✓	✓
29		✓	✓	✓	✓	✓	✓	✓	✓	✓	✓
28		✓	✓	✓	✓	✓	✓	✓	✓	✓	✓
27		✓	✓	✓	✓	✓	✓	✓	✓	✓	✓
26		✓	✓	✓	✓	✓	✓	✓	✓	✓	✓
25		✓	✓	✓	✓	✓	✓	✓	✓	✓	✓
23		✓	✓	✓	✓	✓	✓	✓	✓	✓	✓
22		✓	✓	✓	✓	✓	✓	✓	✓	✓	✓
21		✓	✓	✓	✓	✓	✓	✓	✓	✓	✓
20		✓	✓	✓	✓	✓	✓	✓	✓	✓	✓
19		✓	✓	✓*	—	✓*	—	✓	✓	✓	✓
18		✓	✓	✓	✓	✓	✓	✓	✓	✓	✓
17		✓	✓	✓	✓	✓	✓	✓	✓	✓	✓
16		✓	✓	✓	✓	✓	✓	✓	✓	✓	✓
15		✓	✓	✓	✓	✓	✓	✓	✓	✓	✓
12		✓	✓	✓	✓	✓	✓	✓	✓	✓	✓
11		✓	✓	✓	✓	✓	✓	✓	✓	✓	✓
10		✓	✓	✓	✓	✓	✓	✓	✓	✓	✓
9		✓	✓	✓	✓	✓	✓	✓	✓	✓	✓
8		✓	✓	✓	✓	✓	✓	✓	✓	✓	✓
7		✓	✓	✓	✓	✓	✓	—	—	✓	✓
6		—	—	—	—	—	—	—	—	—	—
5		—	—	—	—	—	—	—	—	—	—
3		—	—	—	—	—	—	—	—	—	—
2		—	—	—	—	—	—	—	—	—	—
1		—	—	—	—	—	—	—	—	—	—
G		✓	✓	✓	✓	✓	✓	✓	✓	✓	✓
B1		—	—	✓	—	—	—	—	—	—	—
B2		✓	✓	✓	✓	✓	✓	✓	✓	✓	✓
B3		✓	✓	✓	✓	✓	✓	✓	✓	✓	✓
B4				✓	✓	✓	✓	✓	✓		

✓ = Lift Door Opening  
— = No Lift Door Opening  
✓\* = Lift door opens when fireman switch is operated by fireman

Floor Schematic for All Lifts

Floor		Tower 8		Hotel Tower 2						
	Brand	Schindler Elevator								
	Model No.	Schindler 7000	5500 MMR	Schindler 7000					5500 MMR	5500 MRL
	Lift No.	L13-L14	L15	L18	L19	L20	L21	L22	L23	L24
	Number of Lift	2	1	1	1	1	1	1	1	1
39				✓	✓	✓	✓	✓	✓	
38				✓	✓	✓	✓	✓	✓	
37				✓	✓	✓	✓	✓	✓	
36				✓	✓	✓	✓	✓	✓	
35				✓	✓	✓	✓	✓	✓	
33		✓	✓	✓	✓	✓	✓	✓	✓	
32		✓	✓	✓	✓	✓	✓	✓	✓	
31		✓	✓	✓	✓	✓	✓	✓	✓	
30		✓	✓	✓	✓	✓	✓	✓	✓	
29		✓	✓	✓	✓	✓	✓	✓	✓	
28		✓	✓	✓	✓	✓	✓	✓	✓	
27		✓	✓	✓	✓	✓	✓	✓	✓	
26		✓	✓	✓	✓	✓	✓	✓	✓	
25		✓	✓	✓	✓	✓	✓	✓	✓	
23		✓	✓	✓	✓	✓	✓	✓	✓	
22		✓	✓	✓	✓	✓	✓	✓	✓	
21		✓	✓	✓	✓	✓	✓	✓	✓	
20		✓	✓	✓	✓	✓	✓	✓	✓	
19		✓	✓	✓	✓	✓	✓	✓	✓	
18		✓	✓	✓	✓	✓	✓	✓	✓	
17		✓	✓	✓	✓	✓	✓	✓	✓	
16		✓	✓	✓	✓	✓	✓	✓	✓	
15		✓	✓	✓	✓	✓	✓	✓	✓	
12		✓	✓	✓	✓	✓	✓	✓	✓	
11		✓	✓	✓	✓	✓	✓	✓	✓	
10		✓	✓	✓	✓	✓	✓	✓	✓	
9		✓	✓	✓	✓	✓	✓	✓	✓	
8		✓	✓	✓	✓	✓	✓	✓	✓	
7		✓	✓	✓	✓	✓	✓	✓	✓	
6		—	—	✓	✓	✓	✓	✓	✓	✓
5		—	—	✓	✓	✓	✓	✓	✓	✓
3		—	—	✓	✓	✓	✓	✓	✓	✓
2		—	—	✓	✓	✓	✓	✓	✓	✓
1		—	—	✓	✓	✓	✓	✓	✓	✓
G		✓	✓	—	—	—	—	✓	—	—
B1		—	—	✓	✓	✓	✓	✓	✓	✓
B2		✓	✓		✓	✓	✓	✓	✓	✓
B3		✓	✓							
B4										

✓ = Lift Door Opening

— = No Lift Door Opening

✓\* = Lift door opens when fireman switch is operated by fireman

Floor Schematic for All Lifts

Floor		Hotel West Low Zone		Hotel East Low Zone			Podium					
	Brand	Schindler Elevator										
	Model No.	5500 MRL		5500 MRL			5500 MRL			5400 MRL	5500 MRL	
	Lift No.	L16	L17	L25	L26	L27	L28	L29	L30	L31	L32	L33
	Number of Lift	1	1	1	1	1	1	1	1	1	1	1
39												
38												
37												
36												
35												
33												
32												
31												
30												
29												
28												
27												
26												
25												
23												
22												
21												
20												
19												
18												
17												
16												
15												
12												
11												
10												
9												
8												
7				✓	✓	✓						
6		✓	✓	✓	✓	✓						
5		✓	✓	✓	✓	✓						
3		✓	✓	✓	✓	✓						
2		✓	✓	✓	✓	✓						
1		✓	✓	✓	✓	✓					✓	
G		—	—	✓	—	—	✓	✓	✓		✓	
B1		✓	✓	✓	✓	✓	—	✓	✓	✓		✓
B2		✓		✓			✓	—		✓		✓
B3		✓		✓								
B4				✓								

✓ = Lift Door Opening  
— = No Lift Door Opening  
✓\* = Lift door opens when fireman switch is operated by fireman



住宅單位機電裝置數量說明表 SCHEDULE OF MECHANICAL &amp; ELECTRICAL PROVISIONS OF RESIDENTIAL UNITS

座 Tower		1		3		5	
單位 Unit		A	B	A	B	A	B
樓層 Floor		7樓-33樓 7/F-33/F		7樓-37樓 7/F-37/F		7樓-37樓 7/F-37/F	
電梯大堂 Lift Lobby	燈位 Lighting Point	6	5	5	5	5	5
	門鈴按鈕 Door Bell Push Button	1	1	1	1	1	1
	裝有熔斷器接線電蘇位 Fused Spur Unit	1	1	1	2	1	1
客廳/飯廳 Living/Dining Room (LIV/DIN.)	空調機室內機接駁點 Air-conditioner point for A/C Indoor Unit	2	2	2	2	2	2
	13A雙位電插座 13A Twin Socket Outlet	3	3	3	3	3	3
	電視/電台天線插座 TV/FM Outlet	2	2	2	2	2	2
	電話插座 Telephone Outlet	2	2	2	2	2	2
	總數據位 Incoming Data Outlet	1	1	1	1	1	1
	RJ45 數據位 RJ45 Data Outlet	1	1	1	1	1	1
	抽氣扇開關掣 Switch for Exhaust Air Fan	2	3	2	2	2	2
	電熱水爐開關掣 Switch for Electrical Water Heater	1	1	1	1	1	1
	抽氣扇及電熱水爐開關掣 Switch for Exhaust Air Fan and Electrical Water Heater	—	—	—	—	—	—
	燈掣 Lighting Switch	5	6	5	5	5	5
	燈位 Lighting Point	5	5	4	5	5	5
	裝有熔斷器接線電掣 Fused Connection Unit	—	—	—	—	—	—
主人睡房 Master Bedroom (M.B.R.)	空調機室內機接駁點 Air-conditioner point for A/C Indoor Unit	1	1	1	1	1	1
	13A雙位電插座 13A Twin Socket Outlet	2	2	2	2	2	2
	電視/電台天線插座 TV/FM Outlet	1	1	1	1	1	1
	電話插座 Telephone Outlet	1	1	1	1	1	1
	RJ45 數據位 RJ45 Data Outlet	1	1	1	1	1	1
	抽氣扇開關掣 Switch for Exhaust Air Fan	1	1	1	1	1	1
	電熱水爐開關掣 Switch for Electrical Water Heater	1	1	1	1	1	1
	燈掣 Lighting Switch	3	3	2	2	2	2
	燈位 Lighting Point	1	1	1	1	1	1
1號睡房 Bedroom 1 (B.R. 1)	空調機室內機接駁點 Air-conditioner point for A/C Indoor Unit	1	1	1	1	1	1
	13A雙位電插座 13A Twin Socket Outlet	1	1	1	1	1	1
	電視/電台天線插座 TV/FM Outlet	1	1	1	1	1	1
	電話插座 Telephone Outlet	1	1	1	1	1	1
	RJ45 數據位 RJ45 Data Outlet	1	1	1	1	1	1
	燈掣 Lighting Switch	1	1	1	1	1	1
	燈位 Lighting Point	1	1	1	1	1	1
2號睡房 Bedroom 2 (B.R. 2)	空調機室內機接駁點 Air-conditioner point for A/C Indoor Unit	1	1	1	1	1	1
	13A雙位電插座 13A Twin Socket Outlet	1	1	1	1	1	1

備註：第1、7及8座住宅樓層不設13樓、14樓及24樓。第3、5及6座住宅樓層不設13樓、14樓、24樓及34樓。第3及5座19樓為庇護層。

Remark: Residential floors 13/F, 14/F and 24/F of Towers 1, 7 and 8 are omitted. Residential floors 13/F, 14/F, 24/F and 34/F of Towers 3, 5 and 6 are omitted. 19/F of Towers 3 and 5 is refuge floor.

座 Tower		1		3		5	
單位 Unit		A	B	A	B	A	B
樓層 Floor		7樓-33樓 7/F-33/F		7樓-37樓 7/F-37/F		7樓-37樓 7/F-37/F	
2號睡房 Bedroom 2 (B.R. 2)	電視/電台天線插座 TV/FM Outlet	1	1	1	1	1	1
	電話插座 Telephone Outlet	1	1	1	1	1	1
	RJ45 數據位 RJ45 Data Outlet	1	1	1	1	1	1
	燈掣 Lighting Switch	1	1	1	1	1	1
	燈位 Lighting Point	1	1	1	1	1	1
3號睡房 Bedroom 3 (B.R. 3)	空調機室內機接駁點 Air-conditioner point for A/C Indoor Unit	1	1	不適用 N/A	不適用 N/A	不適用 N/A	不適用 N/A
	13A雙位電插座 13A Twin Socket Outlet	1	1				
	電視/電台天線插座 TV/FM Outlet	1	1				
	電話插座 Telephone Outlet	1	1				
	RJ45 數據位 RJ45 Data Outlet	1	1				
	抽氣扇開關掣 Switch for Exhaust Air Fan	1	1				
	電熱水爐開關掣 Switch for Electrical Water Heater	1	1				
	燈掣 Lighting Switch	2	2				
	燈位 Lighting Point	1	1				
主人浴室 Master Bathroom (M. Bath)	13A單位電插座 13A Single Socket Outlet	1	1	1	1	1	1
	電熱水爐 Electrical Water Heater	1	1	1	1	1	1
	抽氣扇 Exhaust Fan	1	2	1	1	1	1
	燈位 Lighting Point	4	4	3	3	3	3
	裝有熔斷器接線電掣 Fused Connection Unit	4	5	4	4	4	4
1號浴室 Bathroom 1 (Bath 1)	13A單位電插座 13A Single Socket Outlet	1	1	1	1	1	1
	電熱水爐 Electrical Water Heater	1	1	1	1	1	1
	抽氣扇 Exhaust Fan	1	1	1	1	1	1
	燈位 Lighting Point	3	3	3	3	3	3
	裝有熔斷器接線電掣 Fused Connection Unit	4	4	4	4	4	4
2號浴室 Bathroom 2 (Bath 2)	13A單位電插座 13A Single Socket Outlet	1	1	不適用 N/A	不適用 N/A	不適用 N/A	不適用 N/A
	電熱水爐 Electrical Water Heater	1	1				
	抽氣扇 Exhaust Fan	1	1				
	燈位 Lighting Point	3	3				
	裝有熔斷器接線電掣 Fused Connection Unit	4	4				
浴室 Bathroom	13A單位電插座 13A Single Socket Outlet	不適用 N/A	不適用 N/A	不適用 N/A	不適用 N/A	不適用 N/A	不適用 N/A
	電熱水爐 Electrical Water Heater						
	抽氣扇 Exhaust Fan						
	燈位 Lighting Point						
	裝有熔斷器接線電掣 Fused Connection Unit						
化妝間 Powder Room (Powd)	13A單位電插座 13A Single Socket Outlet	不適用 N/A	1	不適用 N/A	不適用 N/A	不適用 N/A	不適用 N/A
	燈位 Lighting Point		2				
	裝有熔斷器接線電掣 Fused Connection Unit		2				

備註：第1、7及8座住宅樓層不設13樓、14樓及24樓。第3、5及6座住宅樓層不設13樓、14樓、24樓及34樓。第3及5座19樓為庇護層。  
Remark: Residential floors 13/F, 14/F and 24/F of Towers 1, 7 and 8 are omitted. Residential floors 13/F, 14/F, 24/F and 34/F of Towers 3, 5 and 6 are omitted. 19/F of Towers 3 and 5 is refuge floor.

座 Tower		1		3		5	
單位 Unit		A	B	A	B	A	B
樓層 Floor		7樓-33樓 7/F-33/F		7樓-37樓 7/F-37/F		7樓-37樓 7/F-37/F	
洗手間 Lavatory (Lav.)	燈位 Lighting Point	2	2	2	2	2	2
	裝有熔斷器接線電掣 Fused Connection Unit	—	—	—	—	—	—
廚房 Kitchen (Kit.)	13A單位電插座 13A Single Socket Outlet	4	4	4	4	4	4
	13A雙位電插座 13A Twin Socket Outlet	2	2	2	2	2	2
	洗衣機來水位 (來水位，設計為直徑22毫米) Washing Machine Connection Point (Water Inlet of a design of 22mm in diameter)	1	1	1	1	1	1
	洗衣機去水位 (去水位，設計為直徑40毫米) Washing Machine Connection Point (Water Outlet of a design of 40mm in diameter)	1	1	1	1	1	1
	門鈴 Door Bell	1	1	1	1	1	1
	燈掣 Lighting Switch	—	—	—	—	—	—
	燈位 Lighting Point	2	1	2	1	1	1
	裝有熔斷器接線電掣 Fused Connection Unit	6	6	6	6	6	6
	20A 雙極開關掣 20A Double Pole Switch	2	2	2	2	2	2
	電熱水爐 Electrical Water Heater	—	—	—	—	—	—
	抽氣扇開關掣 Switch for Exhaust Air Fan	—	—	—	—	—	—
	電熱水爐開關掣 Switch for Electrical Water Heater	—	—	—	—	—	—
	總電掣箱 Miniature Circuit Breakers Board	—	—	—	—	—	—
	煤氣自動讀錶接駁點 Towngas Automatic Meter Reading Connection Point	1 (適用於10樓、 19樓、27樓 及32樓 For 10/F, 19/F, 27/F & 32/F)	1 (適用於10樓、 19樓、27樓 及32樓 For 10/F, 19/F, 27/F & 32/F)	1 (適用於9樓、 16樓、23樓、 29樓及35樓 For 9/F, 16/F, 23/F, 29/F & 35/F)	1 (適用於9樓、 16樓、23樓、 29樓及35樓 For 9/F, 16/F, 23/F, 29/F & 35/F)	1 (適用於9樓、 16樓、23樓、 29樓及35樓 For 9/F, 16/F, 23/F, 29/F & 35/F)	1 (適用於9樓、 16樓、23樓、 29樓及35樓 For 9/F, 16/F, 23/F, 29/F & 35/F)
工作間 Utility Room (UTI)	13A單位電插座 13A Single Socket Outlet	1	1	1	1	1	1
	抽氣扇開關掣 Switch for Exhaust Air Fan	1	1	1	1	1	1
	電熱水爐 Electrical Water Heater	1	1	1	1	1	1
	燈掣 Lighting Switch	2	2	2	2	2	2
	燈位 Lighting Point	1	1	1	1	1	1
	裝有熔斷器接線電掣 Fused Connection Unit	2	2	1	1	1	1
	總電掣箱 Miniature Circuit Breakers Board	1	1	1	1	1	1
儲物房 Store Room (STO)	13A單位電插座 13A Single Socket Outlet	不適用 N/A	不適用 N/A	不適用 N/A	不適用 N/A	不適用 N/A	不適用 N/A
	燈位 Lighting Point						
	裝有熔斷器接線電掣 Fused Connection Unit						
	總電掣箱 Miniature Circuit Breakers Board						
工作平台 Utility Platform (U.P.)	燈位 Lighting Point	1	1	不適用 N/A	不適用 N/A	不適用 N/A	不適用 N/A

備註：第1、7及8座住宅樓層不設13樓、14樓及24樓。第3、5及6座住宅樓層不設13樓、14樓、24樓及34樓。第3及5座19樓為庇護層。

Remark: Residential floors 13/F, 14/F and 24/F of Towers 1, 7 and 8 are omitted. Residential floors 13/F, 14/F, 24/F and 34/F of Towers 3, 5 and 6 are omitted. 19/F of Towers 3 and 5 is refuge floor.

座 Tower		1		3		5	
單位 Unit		A	B	A	B	A	B
樓層 Floor		7樓-33樓 7/F-33/F		7樓-37樓 7/F-37/F		7樓-37樓 7/F-37/F	
露台 Balcony (BAL.)	燈位 Lighting Point	1	1	1	1	1	1
冷氣機平台 (近廚房) A/C Plant Area (Near Kitchen)	空調機室外機接駁點 Air-conditioner point for A/C Outdoor Unit	2	2	1	不適用 N/A	1	1
冷氣機平台 (近客廳/ 飯廳) A/C Plant Area (Near Living/Dining Room)	空調機室外機接駁點 Air-conditioner point for A/C Outdoor Unit	不適用 N/A	不適用 N/A	不適用 N/A	不適用 N/A	不適用 N/A	不適用 N/A
冷氣機平台 (近主人睡房) A/C Plant Area (Near Master Bedroom)	空調機室外機接駁點 Air-conditioner point for A/C Outdoor Unit	不適用 N/A	不適用 N/A	不適用 N/A	不適用 N/A	不適用 N/A	不適用 N/A
冷氣機平台 (近1號睡房) A/C Plant Area (Near Bedroom 1)	空調機室外機接駁點 Air-conditioner point for A/C Outdoor Unit	不適用 N/A	不適用 N/A	不適用 N/A	不適用 N/A	不適用 N/A	不適用 N/A
冷氣機平台 (近2號睡房) A/C Plant Area (Near Bedroom 2)	空調機室外機接駁點 Air-conditioner point for A/C Outdoor Unit	不適用 N/A	不適用 N/A	1	2	1	1
冷氣機平台 (近主人浴室) A/C Plant Area (Near Master Bathroom)	空調機室外機接駁點 Air-conditioner point for A/C Outdoor Unit	不適用 N/A	不適用 N/A	不適用 N/A	不適用 N/A	不適用 N/A	不適用 N/A
冷氣機平台 (近公眾樓梯) A/C Plant Area (Near Public Staircase)	空調機室外機接駁點 Air-conditioner point for A/C Outdoor Unit	不適用 N/A	不適用 N/A	不適用 N/A	不適用 N/A	不適用 N/A	不適用 N/A
天台 Roof	13A防水單位電插座 13A Weatherproof Single Socket Outlet	1 (適用於33 樓天台 For 33/F Roof)	1 (適用於33 樓天台 For 33/F Roof)	1 (適用於37 樓天台 For 37/F Roof)	1 (適用於37 樓天台 For 37/F Roof)	1 (適用於37 樓天台 For 37/F Roof)	1 (適用於37 樓天台 For 37/F Roof)
	燈位 Lighting Point	6 (適用於33 樓天台 For 33/F Roof)	5 (適用於33 樓天台 For 33/F Roof)	5 (適用於37 樓天台 For 37/F Roof)	5 (適用於37 樓天台 For 37/F Roof)	3 (適用於37 樓天台 For 37/F Roof)	5 (適用於37 樓天台 For 37/F Roof)
	燈掣 Lighting Switch	1 (適用於33 樓天台 For 33/F Roof)	1 (適用於33 樓天台 For 33/F Roof)	1 (適用於37 樓天台 For 37/F Roof)	1 (適用於37 樓天台 For 37/F Roof)	1 (適用於37 樓天台 For 37/F Roof)	1 (適用於37 樓天台 For 37/F Roof)

備註：第1、7及8座住宅樓層不設13樓、14樓及24樓。第3、5及6座住宅樓層不設13樓、14樓、24樓及34樓。第3及5座19樓為庇護層。  
Remark: Residential floors 13/F, 14/F and 24/F of Towers 1, 7 and 8 are omitted. Residential floors 13/F, 14/F, 24/F and 34/F of Towers 3, 5 and 6 are omitted. 19/F of Towers 3 and 5 is refuge floor.



座 Tower		6						7		8	
單位 Unit		A	C	D	E	B	B	A	B	A	B
樓層 Floor		8樓-37樓 8/F-37/F				8樓-30樓 8/F-30/F	31樓-37樓 31/F-37/F	7樓-33樓 7/F-33/F		7樓-33樓 7/F-33/F	
電梯大堂 Lift Lobby	燈位 Lighting Point	—	—	—	—	—	—	5	5	5	5
	門鈴按鈕 Door Bell Push Button	1	1	1	1	1	1	1	1	1	1
	裝有熔斷器接線電蘇位 Fused Spur Unit	1	1	1	1	1	1	1	1	1	1
客廳/飯廳 Living/Dining Room (LIV./DIN.)	空調機室內機接駁點 Air-conditioner point for A/C Indoor Unit	2	2	2	2	2	2	2	2	2	2
	13A雙位電插座 13A Twin Socket Outlet	3	3	3	3	3	3	3	3	3	3
	電視/電台天線插座 TV/FM Outlet	2	2	2	2	2	2	2	2	2	2
	電話插座 Telephone Outlet	2	2	2	2	2	2	2	2	2	2
	總數據位 Incoming Data Outlet	1	1	1	1	1	1	1	1	1	1
	RJ45 數據位 RJ45 Data Outlet	1	1	1	1	1	1	1	1	1	1
	抽氣扇開關掣 Switch for Exhaust Air Fan	2	2	2	2	2	2	3	3	3	2
	電熱水爐開關掣 Switch for Electrical Water Heater	1	1	2	2	1	1	1	1	1	1
	抽氣扇及電熱水爐開關掣 Switch for Exhaust Air Fan and Electrical Water Heater	—	1	—	—	1	1	—	—	—	—
	燈掣 Lighting Switch	4	5	4	4	4	4	7	7	6	5
	燈位 Lighting Point	3	4	2	2	3	3	5	5	5	4
	裝有熔斷器接線電掣 Fused Connection Unit	—	—	—	—	—	—	2	—	—	—
主人睡房 Master Bedroom (M.B.R.)	空調機室內機接駁點 Air-conditioner point for A/C Indoor Unit	1	1	1	1	1	1	1	1	1	1
	13A雙位電插座 13A Twin Socket Outlet	2	2	2	2	2	2	2	2	2	2
	電視/電台天線插座 TV/FM Outlet	1	1	1	1	1	1	1	2	1	1
	電話插座 Telephone Outlet	1	1	1	1	1	1	1	1	1	1
	RJ45 數據位 RJ45 Data Outlet	1	1	1	1	1	1	1	2	1	1
	抽氣扇開關掣 Switch for Exhaust Air Fan	1	1	—	—	—	—	1	1	1	1
	電熱水爐開關掣 Switch for Electrical Water Heater	1	1	—	—	—	—	1	1	1	1
	燈掣 Lighting Switch	2	2	2	2	1	1	3	3	3	3
	燈位 Lighting Point	1	1	1	1	1	1	1	1	1	1
1號睡房 Bedroom 1 (B.R. 1)	空調機室內機接駁點 Air-conditioner point for A/C Indoor Unit	1	1	1	1	不適用 N/A	1	1	1	1	1
	13A雙位電插座 13A Twin Socket Outlet	1	1	1	1		1	1	1	1	1
	電視/電台天線插座 TV/FM Outlet	1	1	1	1		1	1	1	1	1
	電話插座 Telephone Outlet	1	1	1	1		1	1	1	1	1
	RJ45 數據位 RJ45 Data Outlet	1	1	1	1		1	1	1	1	1
	燈掣 Lighting Switch	1	1	1	1		1	1	1	1	1
	燈位 Lighting Point	1	1	1	1		1	1	1	1	1
2號睡房 Bedroom 2 (B.R. 2)	空調機室內機接駁點 Air-conditioner point for A/C Indoor Unit	1	1	不適用 N/A	不適用 N/A	不適用 N/A	不適用 N/A	1	1	1	1
	13A雙位電插座 13A Twin Socket Outlet	1	1					1	1	1	1

備註：第1、7及8座住宅樓層不設13樓、14樓及24樓。第3、5及6座住宅樓層不設13樓、14樓、24樓及34樓。第3及5座19樓為庇護層。

Remark: Residential floors 13/F, 14/F and 24/F of Towers 1, 7 and 8 are omitted. Residential floors 13/F, 14/F, 24/F and 34/F of Towers 3, 5 and 6 are omitted. 19/F of Towers 3 and 5 is refuge floor.

裝置、裝修物料及設備

Fittings, finishes and appliances

座 Tower		6						7		8	
單位 Unit		A	C	D	E	B	B	A	B	A	B
樓層 Floor		8樓-37樓 8/F-37/F				8樓-30樓 8/F-30/F	31樓-37樓 31/F-37/F	7樓-33樓 7/F-33/F		7樓-33樓 7/F-33/F	
2號睡房 Bedroom 2 (B.R. 2)	電視/電台天線插座 TV/FM Outlet	1	1	不適用 N/A	不適用 N/A	不適用 N/A	不適用 N/A	1	1	1	1
	電話插座 Telephone Outlet	1	1					1	1	1	1
	RJ45 數據位 RJ45 Data Outlet	1	1					1	1	1	1
	燈掣 Lighting Switch	1	1					1	1	1	1
	燈位 Lighting Point	1	1					1	1	1	1
3號睡房 Bedroom 3 (B.R. 3)	空調機室內機接駁點 Air-conditioner point for A/C Indoor Unit	不適用 N/A	不適用 N/A	不適用 N/A	不適用 N/A	不適用 N/A	不適用 N/A	1	1	1	1
	13A雙位電插座 13A Twin Socket Outlet							1	1	1	1
	電視/電台天線插座 TV/FM Outlet							1	1	1	1
	電話插座 Telephone Outlet							1	1	1	1
	RJ45 數據位 RJ45 Data Outlet							1	1	1	1
	抽氣扇開關掣 Switch for Exhaust Air Fan							1	1	1	1
	電熱水爐開關掣 Switch for Electrical Water Heater							—	—	—	—
	燈掣 Lighting Switch							1	1	1	1
	燈位 Lighting Point							1	1	1	1
主人浴室 Master Bathroom (M. Bath)	13A單位電插座 13A Single Socket Outlet	1	1	不適用 N/A	不適用 N/A	不適用 N/A	不適用 N/A	1	1	1	1
	電熱水爐 Electrical Water Heater	1	1					1	1	1	1
	抽氣扇 Exhaust Fan	1	1					1	1	1	1
	燈位 Lighting Point	3	3					4	4	4	4
	裝有熔斷器接線電掣 Fused Connection Unit	4	4					4	4	4	6
1號浴室 Bathroom 1 (Bath 1)	13A單位電插座 13A Single Socket Outlet	1	1	不適用 N/A	不適用 N/A	不適用 N/A	不適用 N/A	1	1	1	1
	電熱水爐 Electrical Water Heater	1	1					1	1	1	1
	抽氣扇 Exhaust Fan	1	1					1	1	1	1
	燈位 Lighting Point	3	3					3	3	3	3
	裝有熔斷器接線電掣 Fused Connection Unit	4	4					4	6	6	4
2號浴室 Bathroom 2 (Bath 2)	13A單位電插座 13A Single Socket Outlet	不適用 N/A	不適用 N/A	不適用 N/A	不適用 N/A	不適用 N/A	不適用 N/A	不適用 N/A	不適用 N/A	不適用 N/A	不適用 N/A
	電熱水爐 Electrical Water Heater										
	抽氣扇 Exhaust Fan										
	燈位 Lighting Point										
	裝有熔斷器接線電掣 Fused Connection Unit										
浴室 Bathroom	13A單位電插座 13A Single Socket Outlet	不適用 N/A	不適用 N/A	1	1	1	1	不適用 N/A	不適用 N/A	不適用 N/A	不適用 N/A
	電熱水爐 Electrical Water Heater			1	1	1	1				
	抽氣扇 Exhaust Fan			1	1	1	1				
	燈位 Lighting Point			3	3	3	3				
	裝有熔斷器接線電掣 Fused Connection Unit			4	4	4	4				
化妝間 Powder Room (Powd)	13A單位電插座 13A Single Socket Outlet	不適用 N/A	不適用 N/A	不適用 N/A	不適用 N/A	不適用 N/A	不適用 N/A	1	1	1	1
	燈位 Lighting Point							2	2	2	2
	裝有熔斷器接線電掣 Fused Connection Unit							1	1	1	1

備註：第1、7及8座住宅樓層不設13樓、14樓及24樓。第3、5及6座住宅樓層不設13樓、14樓、24樓及34樓。第3及5座19樓為庇護層。  
Remark: Residential floors 13/F, 14/F and 24/F of Towers 1, 7 and 8 are omitted. Residential floors 13/F, 14/F, 24/F and 34/F of Towers 3, 5 and 6 are omitted. 19/F of Towers 3 and 5 is refuge floor.

座 Tower		6						7		8	
單位 Unit		A	C	D	E	B	B	A	B	A	B
樓層 Floor		8樓-37樓 8/F-37/F				8樓-30樓 8/F-30/F	31樓-37樓 31/F-37/F	7樓-33樓 7/F-33/F		7樓-33樓 7/F-33/F	
洗手間 Lavatory (Lav.)	燈位 Lighting Point	2	不適用 N/A	不適用 N/A	不適用 N/A	不適用 N/A	不適用 N/A	2	2	1	2
	裝有熔斷器接線電掣 Fused Connection Unit	1						–	–	–	–
廚房 Kitchen (Kit.)	13A單位電插座 13A Single Socket Outlet	3	3	3	3	3	3	4	4	4	4
	13A雙位電插座 13A Twin Socket Outlet	2	2	2	2	2	2	2	2	2	2
	洗衣機來水位 (來水位，設計為直徑22毫米) Washing Machine Connection Point (Water Inlet of a design of 22mm in diameter)	1	1	1	1	1	1	1	1	1	1
	洗衣機去水位 (去水位，設計為直徑40毫米) Washing Machine Connection Point (Water Outlet of a design of 40mm in diameter)	1	1	1	1	1	1	1	1	1	1
	門鈴 Door Bell	1	1	1	1	1	1	1	1	1	1
	燈掣 Lighting Switch	1	2	–	–	–	–	–	–	–	2
	燈位 Lighting Point	1	1	2	2	1	1	2	2	1	2
	裝有熔斷器接線電掣 Fused Connection Unit	5	5	4	4	5	5	6	6	6	6
	20A 雙極開關掣 20A Double Pole Switch	1	1	2	2	1	1	2	2	2	2
	電熱水爐 Electrical Water Heater	–	–	1	1	1	1	–	–	–	–
	抽氣扇開關掣 Switch for Exhaust Air Fan	–	–	–	–	–	–	–	–	–	1
	電熱水爐開關掣 Switch for Electrical Water Heater	–	–	–	–	–	–	–	–	–	1
	總電掣箱 Miniature Circuit Breakers Board	–	–	1	1	1	1	–	–	–	–
	煤氣自動讀錶接駁點 Towngas Automatic Meter Reading Connection Point	1 (適用於 11樓、 20樓、 28樓及 36樓 For 11/F, 20/F, 28/F & 36/F)	1 (適用於 11樓、 20樓、 28樓及 36樓 For 11/F, 20/F, 28/F & 36/F)	1 (適用於 11樓、 20樓、 28樓及 36樓 For 11/F, 20/F, 28/F & 36/F)	1 (適用於 11樓、 20樓、 28樓及 36樓 For 11/F, 20/F, 28/F & 36/F)	1 (適用於 11樓、 20樓、 28樓及 36樓 For 11/F, 20/F, 28/F & 36/F)	1 (適用於 11樓、 20樓、 28樓及 36樓 For 11/F, 20/F, 28/F & 36/F)	1 (適用於 10樓、 19樓、 27樓及 32樓 For 10/F, 19/F, 27/F & 32/F)	1 (適用於 10樓、 19樓、 27樓及 32樓 For 10/F, 19/F, 27/F & 32/F)	1 (適用於 10樓、 19樓、 27樓及 32樓 For 10/F, 19/F, 27/F & 32/F)	1 (適用於 10樓、 19樓、 27樓及 32樓 For 10/F, 19/F, 27/F & 32/F)
工作間 Utility Room (UTI)	13A單位電插座 13A Single Socket Outlet	1	不適用 N/A	不適用 N/A	不適用 N/A	不適用 N/A	不適用 N/A	1	1	1	不適用 N/A
	抽氣扇開關掣 Switch for Exhaust Air Fan	1						1	1	1	
	電熱水爐 Electrical Water Heater	1						1	1	1	
	燈掣 Lighting Switch	1						1	1	1	
	燈位 Lighting Point	1						1	1	1	
	裝有熔斷器接線電掣 Fused Connection Unit	–						1	3	3	
	總電掣箱 Miniature Circuit Breakers Board	1						1	1	1	
儲物房 Store Room (STO)	13A單位電插座 13A Single Socket Outlet	不適用 N/A	–	不適用 N/A	不適用 N/A	不適用 N/A	不適用 N/A	不適用 N/A	不適用 N/A	不適用 N/A	1
	燈位 Lighting Point		1								1
	裝有熔斷器接線電掣 Fused Connection Unit		–								1
	總電掣箱 Miniature Circuit Breakers Board		1								1

備註：第1、7及8座住宅樓層不設13樓、14樓及24樓。第3、5及6座住宅樓層不設13樓、14樓、24樓及34樓。第3及5座19樓為庇護層。  
Remark: Residential floors 13/F, 14/F and 24/F of Towers 1, 7 and 8 are omitted. Residential floors 13/F, 14/F, 24/F and 34/F of Towers 3, 5 and 6 are omitted. 19/F of Towers 3 and 5 is refuge floor.

座 Tower		6						7		8	
單位 Unit		A	C	D	E	B	B	A	B	A	B
樓層 Floor		8樓-37樓 8/F-37/F				8樓-30樓 8/F-30/F	31樓-37樓 31/F-37/F	7樓-33樓 7/F-33/F		7樓-33樓 7/F-33/F	
工作平台 Utility Platform (U.P.)	燈位 Lighting Point	1	1	1	1	1	1	1	1	1	1
露台 Balcony (BAL.)	燈位 Lighting Point	1	1	1	1	1	1	1	1	1	1
冷氣機平台 (近廚房) A/C Plant Area (Near Kitchen)	空調機室外機接駁點 Air-conditioner point for A/C Outdoor Unit	不適用 N/A	不適用 N/A	不適用 N/A	不適用 N/A	不適用 N/A	不適用 N/A	1	不適用 N/A	不適用 N/A	1
冷氣機平台 (近客廳/ 飯廳) A/C Plant Area (Near Living/Dining Room)	空調機室外機接駁點 Air-conditioner point for A/C Outdoor Unit	不適用 N/A	不適用 N/A	不適用 N/A	不適用 N/A	1	不適用 N/A	不適用 N/A	不適用 N/A	不適用 N/A	不適用 N/A
冷氣機平台 (近主人睡房) A/C Plant Area (Near Master Bedroom)	空調機室外機接駁點 Air-conditioner point for A/C Outdoor Unit	2	2	不適用 N/A	不適用 N/A	不適用 N/A	不適用 N/A	不適用 N/A	不適用 N/A	不適用 N/A	不適用 N/A
冷氣機平台 (近1號睡房) A/C Plant Area (Near Bedroom 1)	空調機室外機接駁點 Air-conditioner point for A/C Outdoor Unit	不適用 N/A	不適用 N/A	不適用 N/A	不適用 N/A	不適用 N/A	1	不適用 N/A	不適用 N/A	不適用 N/A	不適用 N/A
冷氣機平台 (近2號睡房) A/C Plant Area (Near Bedroom 2)	空調機室外機接駁點 Air-conditioner point for A/C Outdoor Unit	不適用 N/A	不適用 N/A	不適用 N/A	不適用 N/A	不適用 N/A	不適用 N/A	不適用 N/A	不適用 N/A	不適用 N/A	不適用 N/A
冷氣機平台 (近主人浴室) A/C Plant Area (Near Master Bathroom)	空調機室外機接駁點 Air-conditioner point for A/C Outdoor Unit	不適用 N/A	不適用 N/A	不適用 N/A	不適用 N/A	不適用 N/A	不適用 N/A	1	不適用 N/A	不適用 N/A	不適用 N/A
冷氣機平台 (近公眾樓梯) A/C Plant Area (Near Public Staircase)	空調機室外機接駁點 Air-conditioner point for A/C Outdoor Unit	不適用 N/A	不適用 N/A	1	1	不適用 N/A	不適用 N/A	不適用 N/A	2	2	1
天台 Roof	13A防水單位電插座 13A Weatherproof Single Socket Outlet	1 (適用於37樓天台 For 37/F Roof)	1 (適用於37樓天台 For 37/F Roof)	—	—	—	—	1 (適用於33樓天台 For 33/F Roof)	1 (適用於33樓天台 For 33/F Roof)	1 (適用於33樓天台 For 33/F Roof)	1 (適用於33樓天台 For 33/F Roof)
	燈位 Lighting Point	2 (適用於37樓天台 For 37/F Roof)	3 (適用於37樓天台 For 37/F Roof)	—	—	—	—	3 (適用於33樓天台 For 33/F Roof)	4 (適用於33樓天台 For 33/F Roof)	3 (適用於33樓天台 For 33/F Roof)	3 (適用於33樓天台 For 33/F Roof)
	燈掣 Lighting Switch	1 (適用於37樓天台 For 37/F Roof)	1 (適用於37樓天台 For 37/F Roof)	—	—	—	—	1 (適用於33樓天台 For 33/F Roof)	1 (適用於33樓天台 For 33/F Roof)	1 (適用於33樓天台 For 33/F Roof)	1 (適用於33樓天台 For 33/F Roof)

備註：第1、7及8座住宅樓層不設13樓、14樓及24樓。第3、5及6座住宅樓層不設13樓、14樓、24樓及34樓。第3及5座19樓為庇護層。  
Remark: Residential floors 13/F, 14/F and 24/F of Towers 1, 7 and 8 are omitted. Residential floors 13/F, 14/F, 24/F and 34/F of Towers 3, 5 and 6 are omitted. 19/F of Towers 3 and 5 is refuge floor.

食水及沖廁水由水務署供應。  
電力由香港電燈有限公司供應。  
煤氣由香港中華煤氣有限公司供應。

Potable and flushing water is supplied by Water Supplies Department.  
Electricity is supplied by The Hong Kong Electric Co., Ltd.  
Towngas is supplied by The Hong Kong and China Gas Company Limited.

擁有人有法律責任繳付住宅物業直至住宅物業買賣完成日(即該物業轉讓契日期)(包括該日)為止之地稅。

The owner is liable for the Government rent payable for the residential property up to and including the date of completion of the sale and purchase of that residential property (i.e. the date of the assignment of that property).

在向買方交付住宅物業在空置情況下的管有權時，買方須負責向擁有人補還水、電力及氣體的按金；  
在交付時，買方不須向擁有人支付清理廢料的費用。

On the delivery of the vacant possession of a residential property to the purchaser, the purchaser is liable to reimburse the owner for the deposits for water, electricity and gas;

On that delivery, the purchaser is not liable to pay to the owner a debris removal fee.

註：在交付時，買方須根據公契向管理人(而非擁有人)支付清理廢料的費用，而如擁有人已支付清理廢料的費用，買方須向擁有人補還清理廢料的費用。

Remark: On that delivery, the purchaser is liable to pay a debris removal fee to the manager (not the owner) under the deed of mutual covenant, and where the owner has paid that debris removal fee, the purchaser shall reimburse the owner for the same.





## 欠妥之處的保養責任期

### Defect liability warranty period

凡物業或於買賣合約列出裝設於物業內的裝置、裝修物料或設備有欠妥之處，而該欠妥之處並非由買方行為或疏忽造成，則賣方在接獲買方在買賣成交日期後的6個月內送達的書面通知後，須於合理地切實可行的範圍內，盡快自費作出補救。

The Vendor shall, at its own cost and as soon as reasonably practicable after receipt of a written notice served by the Purchaser within 6 months after the date of completion of the sale and purchase, remedy any defects to the Property, or the fittings, finishes or appliances incorporated into the Property as set out in the sale and purchase agreement, caused otherwise than by the act or neglect of the Purchaser.



## 修訂

### Modification

發展項目現時並沒有向政府提出申請修訂批地文件。

No existing application to the Government for a modification of the land grant for the Development.



## 斜坡維修

### Maintenance of slopes

不適用

Not applicable



## 發展項目之互聯網網站

### Website of the development

賣方為施行《一手住宅物業銷售條例》第2部而就發展項目指定的互聯網網站的網址：[www.harbourglory.com.hk](http://www.harbourglory.com.hk)

The address of the website designated by the Vendor for the Development for the purposes of Part 2 of the Residential Properties (First-hand Sales) Ordinance: [www.harbourglory.com.hk](http://www.harbourglory.com.hk)

## A. 吊船系統

根據發展項目公契（「公契」）：

管理人有權於任何構成單位一部分之天台、露台、或工作平台上及暫時佔用其上空操作，暫時停放或移動清潔吊船及/或任何吊船吊臂系統、其他管理裝備或裝置（公契中統稱「吊船」，該詞亦包括所有支架、鉸鏈、支柱或其他相關裝備）以檢查，清潔，保養，翻新，更換及/或維修發展項目外牆及/或公用設施的任何部分，惟管理人行使本權利時須確保對單位之業主或佔用人造成最少騷擾並須自費修復任何因此造成之損害及須為其或其職員及承辦商疏忽或蓄意或刑事行為負責。

上文以公契條款為準。

## B. 消防安全管理計劃

根據公契：

## (a) 附有開放式廚房之住宅單位之業主：

- (i) 須遵守和遵從消防安全管理計劃及管理人不時發出或給予之任何有關實行消防安全管理計劃之指引或指示（包括但不限於相關業主自費維修及保養構成有關住宅單位一部分之消防服務系統）並須確保其住宅單位之租客及其他佔用人遵守和遵從上述消防安全管理計劃及指引或指示。
- (ii) 不得改動，拆除，移除或移動裝置於其住宅單位之防火翼牆、煙霧偵測器配置聲響警報基座及灑水系統。
- (iii) 不得更換防火大門，除非該大門有相同防火規格及自動關門裝置。
- (iv) 須保持消防服務裝置狀況良好，並不得改動，拆除，移除或移動或作出任何可能會改動，破壞或干預任何該等消防服務裝置、其電力連接及其與任何其他警鐘或消防系統的行為。
- (v) 須容許管理人、其代理人、承辦人及獲授權人等在有合理通知的情況下（緊急情況除外）根據適用之規則及法例進入其住宅單位以就安裝於該住宅單位內之消防安全裝置由合適之合資格人員或註冊消防服務裝置承辦商根據消防安全管理計劃進行檢查，保養，校驗、強制年度測試及認證。

## (b) 管理人：

- (i) 須執行消防安全管理計劃，包括但不限於協助附有開放式廚房之住宅單位之業主就其住宅單位之防火系統進行每年保養並向相關政府部門遞交保養證書。
- (ii) 須確保發展項目管理處備有消防安全管理計劃之最新版本供業主檢閱或複印。

上文以公契條款為準。

公契及消防安全管理計劃副本可於售樓處免費參閱。

## C. 酒店冷卻塔

酒店大樓（第2座）的冷卻塔安裝於該大樓的天台，頂部高度為香港主水平基準以上120米。冷卻塔會產生煙羽。有關冷卻塔的位置之詳情，請參閱以下的平面圖。

## A. Gondola

According to the deed of mutual covenant in respect of the Development (the “DMC”):

For the purposes of carrying out the inspection, cleaning, maintenance, renovation, replacement and/or repair of any part of the exterior of the Development and/or the Common Facilities, the Manager shall have the right to operate, temporarily place and/or station, move the cleaning gondola and/or any davit arm, other equipment or device of management (collectively referred to in the DMC as the “gondola” which expression shall include all brackets, hinges, posts or other related equipment) over and/or on any roof, balcony or utility platform forming part of a unit and temporary occupation of any space thereabove Provided that the Manager shall in the exercise of its rights ensure that the least disturbance is caused to the owners or occupiers of the units and shall at its own costs and expense make good any damage caused thereby and shall be liable for negligence or wilful or criminal acts of the Manager, its staff and contractors.

The above is subject to the provisions of the DMC.

## B. Fire Safety Management Plan

According to the DMC:

## (a) The owner of the relevant residential unit with open kitchen:

- (i) shall observe and comply with the Fire Safety Management Plan and any guideline or direction to be issued or given by the Manager from time to time relating to the implementation of the Fire Safety Management Plan (including but not limited to repair and maintenance of the fire services system (which forms part of the relevant residential unit) at the own costs and expenses of the relevant owner or owners) and shall cause his tenants and other occupants of his residential unit to observe and comply with the same.
- (ii) shall not alter, demolish, remove or relocate the fire rated fin wall, smoke detector with sounder base and sprinkler system installed in such residential unit.
- (iii) shall not replace the fire rated entrance door except that the door has the same fire rated specification self-closing device.
- (iv) shall keep the fire service installation in good order and condition and shall not alter, demolish, remove or relocate or do anything which may alter, damage or interfere with any such installation, its power connection or its connection with any other fire alarm or fighting system.
- (v) shall permit the Manager, its servants, agents, contractors and persons duly authorized on prior reasonable notice (except in case of emergency) to gain access to and enter upon his residential unit for the purposes of carrying out inspection, maintenance, commissioning, mandatory annual testing and certification of the fire safety provisions installed therein in accordance with the Fire Safety Management Plan by suitable qualified personnel or registered fire services installation contractors in accordance with all applicable rules and legislations.

## (b) The Manager:

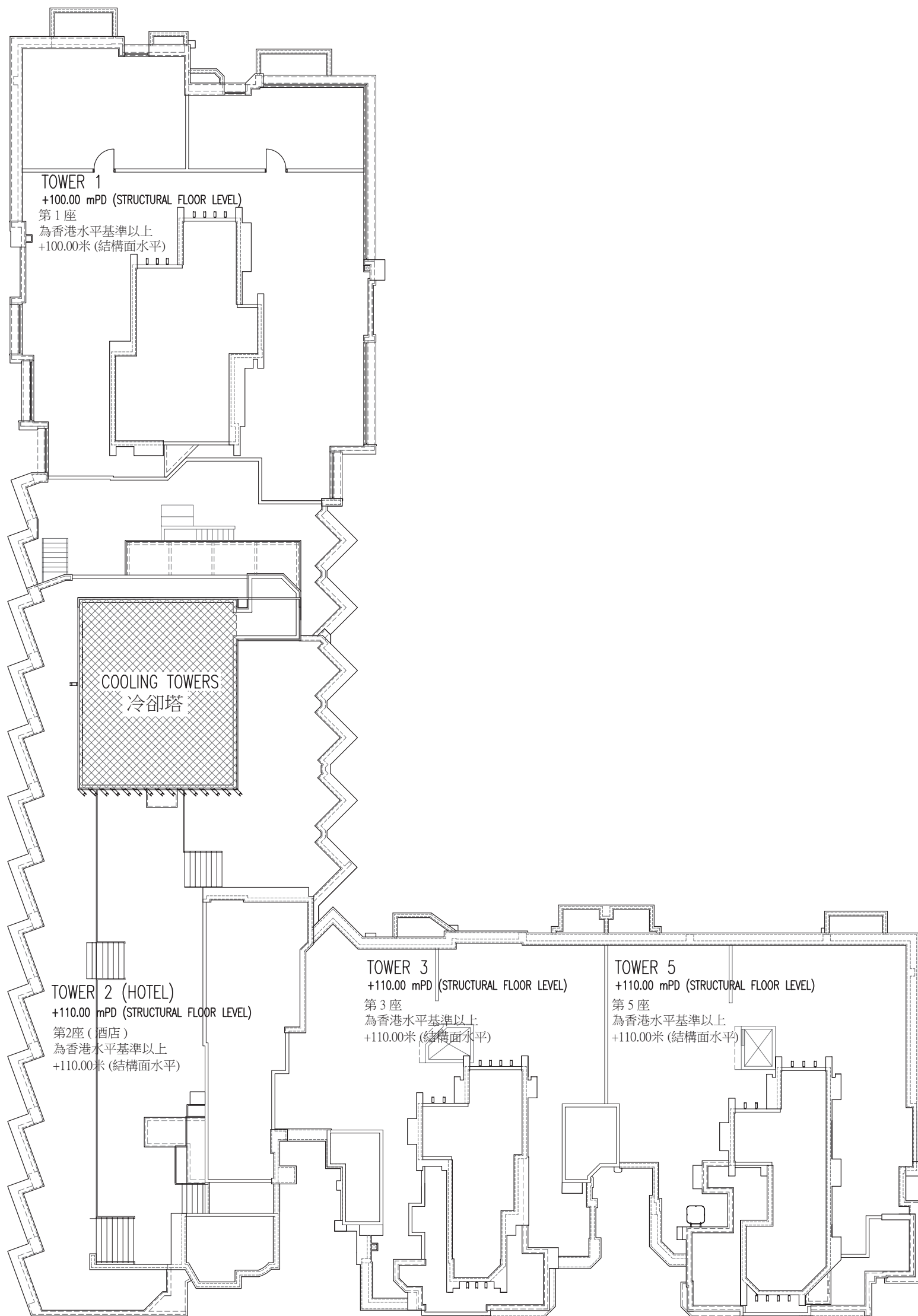
- (i) shall implement the Fire Safety Management Plan including but not limited to, assist the owners of residential units with open kitchen in carrying out annual maintenance of the fire services system of the relevant residential unit and submit the maintenance certificate to the relevant Government authorities.
- (ii) To ensure that the latest version for the Fire Safety Management Plan will be kept at the management office of the Development for inspection or taking copies by the owners.

The above is subject to the provisions of the DMC.

Copies of the DMC and the Fire Safety Management Plan are available for inspection free of charge at the sales office.

## C. Cooling Towers of Hotel

Cooling Towers of the Hotel Tower (Tower 2) are installed on the roof with the top level is 120.00 mPD. Plume will be generated from the Cooling Towers. Please refer to the below plan and sections for more details of the cooling towers location.



第2座酒店天台  
TOWER 2 HOTEL - MAIN ROOF PLAN

備註：此圖僅作顯示酒店大樓（第2座）的冷卻塔的位置，圖中所示之其他事項未必能反映其最新狀況。

Remark: This plan is for showing the location of the Cooling Tower of the Hotel Tower (Tower 2) only. Other matters shown in this plan may not reflect their latest conditions.

Information required by the Director of Lands to be set out in the sales brochure as a condition for giving the presale consent

1. 買方須與賣方於正式合約協議，除可用作按揭或押記外，買方不會於完成正式買賣合約之成交及簽署轉讓契之前，以任何方式，或訂立任何協議以達至，提名任何人士接受轉讓正式買賣合約所指定的住宅物業或停車位，或轉讓該住宅物業或停車位，或轉移該住宅物業或停車位的正式合約的權益。
  2. 如正式買賣合約的買方有此要求，並獲賣方（按其自己的酌情決定）同意之情況下取消正式買賣合約或買方於該正式買賣合約所承擔之責任，賣方有權保留相等於該正式買賣合約所指定的住宅物業及停車位總售價百分之五的款額。同時買方亦須額外付予賣方或付還賣方（視情況而定）全部就取消該正式買賣合約須付之律師費、收費及代墊付費用（包括任何須繳付之印花稅）。
  3. 賣方將會支付或已經支付（視情況而定）由批地文件之日起直至有關個別買方簽署轉讓契之日（包括簽署轉讓契當日）止，所有有關該正在興建的發展項目所處地段的地稅。
  4. 已簽署正式買賣合約的買方有權要求查閱一份有關完成興建發展項目所需的建築費用及專業費用總額的最新資料，及有關直至詢問時的上一個公曆月底為止已動用及支付的建築費用及專業費用總額，並可於提出要求及在支付不超過港幣一百元象徵式費用後獲提供該資料的副本。
  5. 關於批地文件第(3)條批地特別條款提及的「黃色範圍」、批地文件第(4)條批地特別條款提及的「綠色範圍」、批地文件第(6)條批地特別條款提及的「綠色間藍斜線範圍」及「綠色間藍斜線加黑點範圍」、批地文件第(21)(d)條批地特別條款提及的「行人走道」、批地文件第(22)條批地特別條款提及的「有蓋行人天橋」的資料及要求：請參閱以下兩節：「批地文件的摘要」及「公共設施及公眾休憩用地的資料」。
1. The purchaser is required to agree with the Vendor in the Agreement for Sale and Purchase to the effect that other than entering into a mortgage or charge, the purchaser will not nominate any person to take up the Assignment of the Residential Unit or the Parking Space specified in the Agreement for Sale and Purchase, sub-sell that Residential Unit or Parking Space or transfer the benefit of the Agreement for Sale and Purchase of that Residential Unit or Parking Space in any manner whatsoever or enter into any agreement so to do before completion of the sale and purchase and execution of the Assignment.
  2. If the Vendor, at the request of the purchaser under an Agreement for Sale and Purchase, agrees (at its own discretion) to cancel the Agreement for Sale and Purchase or the obligations of the purchaser under the Agreement for Sale and Purchase, the Vendor is entitled to retain the sum of five percent (5%) of the total purchase price of the Residential Unit and the Parking Space specified in the Agreement for Sale and Purchase and the purchaser will in addition pay or reimburse (as the case may be) to the Vendor all legal costs, charges and disbursements (including any stamp duty) in connection with the cancellation of the Agreement for Sale and Purchase.
  3. The Vendor will pay or has paid (as the case may be) all outstanding Government rent in respect of the land on which the Development is in the course of being erected, from the date of the Government Grant up to and including the date of the respective Assignments to the purchasers.
  4. The purchaser who has signed an Agreement for Sale and Purchase has the right of access to and will, upon his request, be provided with a hard copy of an updated record of information as to the total construction costs and the total professional fees to complete the Development as well as the total construction costs and the total professional fees expended and paid as at the end of the calendar month preceding the month at which the request is made subject to payment of a nominal fee of not more than HK\$100 per request.
  5. Information and requirements relating to the Yellow Area as referred to in Special Condition No.(3) of the Land Grant, the Green Areas as referred to in Special Condition No.(4) of the Land Grant, the Green Hatched Blue Areas and the Green Hatched Blue Stippled Black Area as referred to in Special Condition No.(6) of the Land Grant, the Pedestrian Walkway as referred to in Special Condition No.(21)(d) of the Land Grant and the Covered Footbridge referred to in Special Condition No.(22) of the Land Grant: please refer to the sections “Summary of Land Grant” and “Information on public facilities and public open spaces”.



獲寬免總樓面面積的設施分項 Breakdown of Gross Floor Area (GFA) Concessions Obtained for All Features

於印製售樓說明書前呈交予並已獲建築事務監督批准的一般建築圖則上有關總樓面面積寬免的分項的最新資料，請見下表。如印製售樓說明書時尚未呈交最終修訂圖則予建築事務監督，則有(＃)號的資料可以由認可人士提供的資料作為基礎。直至最終修訂圖則於發出有關發展項目的佔用許可證前呈交予並獲建築事務監督批准前，以下分項資料仍可能有所修改。

Latest information on breakdown of GFA concessions as shown on the general building plans submitted to and approved by the Building Authority (BA) prior to the printing of the sales brochure is tabulated below. Information marked (＃) may be based on information provided by the authorized person if the sales brochure is printed prior to submission of the final amendment plans to the BA. The breakdown of GFA concessions may be subject to further changes until final amendment plans are submitted to and approved by the BA prior to the issuance of the occupation permit for the Development.

		面積 (平方米) Area (m²)
根據《建築物(規劃)規例》第23(3)(b)條不計算的總樓面面積 Disregarded GFA under Building (Planning) Regulations 23(3)(b)		
1.	停車場及上落客貨地方 (公共交通總站除外) Carparks and loading / unloading areas excluding public transport terminus	11,343.688
2.	機房及相類設施 Plant rooms and similar services	
2.1	所佔面積受相關《認可人士、註冊結構工程師及註冊岩土工程師作業備考》或規例限制的強制性設施及必要機房，例如升降機機房、電訊及廣播設備室、垃圾及物料回收房等 Mandatory feature or essential plant room, area of which is limited by respective PNAP or regulation such as lift machine room, TBE room, refuse storage and material recovery chamber, etc.	625.839
2.2	所佔面積不受相關《認可人士、註冊結構工程師及註冊岩土工程師作業備考》或規例限制的強制性設施及必要機房，例如僅由消防裝置及設備佔用的房間、電錶房、電力變壓房、食水及鹹水缸等 Mandatory feature and essential plant room, area of which is NOT limited by any PNAP or regulation such as room occupied solely by FSI and equipment, meter room, transformer room, potable and flushing water tank, etc.	4,966.605
2.3	非強制性/非必要機房，例如空調機房、風櫃房等 Non-mandatory / non-essential plant room such as A/C plant room, AHU room, etc.	1,491.371
根據《建築物(規劃)規例》第23A(3)條不計算的總樓面面積 Disregarded GFA under Building (Planning) Regulations 23A(3)		
3.	供人離開或到達旅館時上落汽車的地方 Area for picking up and setting down persons departing from or arriving at the hotel by vehicle	不適用 Not applicable
4.	旅館的輔助性設施 Supporting facilities for a hotel	1,832.389
根據《聯合作業備考》第1號和第2號提供的環保設施 Green Features under Joint Practices Notes 1 and 2		
5.	住宅樓宇露台 Balcony for residential buildings	659.826
6.	加闊的公用走廊及升降機大堂 Wider common corridor and lift lobby	不適用 Not applicable
7.	公用空中花園 Communal sky garden	
8.	非住宅樓宇的公用平台花園 Communal podium garden for non-residential buildings	
9.	隔聲鰭 Acoustic fin	
10.	翼牆、捕風器及風斗 Wing wall, wind catcher and funnel	
11.	非結構性預製外牆 Non-structural prefabricated external wall	345.670
12.	工作平台 Utility platform	205.500
13.	隔音屏障 Noise barrier	不適用 Not applicable
適意設施 Amenity Features		
14.	供保安人員和管理處員工使用的櫃枱、辦公室、儲物室、警衛室和廁所、業主立案法團辦公室 Counter, office, store, guard room and lavatory for watchman and management staff, Owner's Corporation Office	62.291
15.	住宅康樂設施，包括僅供康樂設施使用的中空、機房、游泳池的濾水器機房、有蓋人行道等 Residential Recreational facilities including void, plant room, swimming pool filtration plant room, covered walkway etc serving solely the recreational facilities	1,738.548
16.	有上蓋的園景區及遊樂場 Covered landscaped and play area	1,215.133
17.	橫向屏障/有蓋人行道、花棚 Horizontal screen / covered walkway, trellis	140.373



Information in application for concession on gross floor area of building

		面積 (平方米) Area (m²)
18.	擴大升降機井道 Larger lift shaft	1,880.090
19.	煙囪管道 Chimney shaft	不適用 Not applicable
20.	其他非強制性或非必要機房，例如爐房、衛星電視共用天線房 Other non-mandatory or non-essential plant room, such as boiler room, SMATV room	
21.	強制性設施或必要機房所需的管槽、氣槽 Pipe duct, air duct for mandatory feature or essential plant room	2,393.748
22.	非強制性設施或非必要機房所需的管槽、氣槽 Pipe duct, air duct for non-mandatory or non-essential plant room	99.865
23.	環保系統及設施所需的機房、管槽及氣槽 Plant room, pipe duct, air duct for environmentally friendly system and feature	不適用 Not applicable
24.	非住用發展項目中電影院、商場等的較高的淨高及前方中空 High headroom and void in front of cinema, shopping arcade etc. in non-domestic development	
25.	非住用發展項目的公用主要入口（尊貴入口）上方的中空 Void over main common entrance (Prestige entrance) in non-domestic development	
26.	複式住宅單位及洋房的中空 Void in duplex domestic flat and house	
27.	其他伸出物，如空調機箱或伸出外牆超過750毫米的空調機平台 Other projections such as air-conditioning box and platform with a projection of more than 750mm from the external walls	
其他獲豁免的項目 Other Exempted Items		
28.	庇護層，包括庇護層兼空中花園 Refuge floor including refuge floor cum sky garden	229.243
29.	其他伸出物 Other projections	不適用 Not applicable
30.	公共交通總站 Public transport terminus (PTT)	
31.	共用構築物及樓梯 Party structure and common staircase	
32.	僅供獲接納不計入總樓面面積的樓層使用的樓梯、升降機槽及垂直管道的水平面積 Horizontal area of staircase, lift shaft and vertical duct solely serving floor accepted as not being accountable for GFA	不適用 Not applicable
33.	公眾通道 Public passage	687.218
34.	因樓宇後移導致的覆蓋面積 Covered set back area	不適用 Not applicable
額外總樓面面積 Bonus GFA		
35.	額外總樓面面積 Bonus GFA	不適用 Not applicable

註：上述表格是根據屋宇署所發出的《認可人士、註冊結構工程師及註冊岩土工程師作業備考》ADM-2規定的要求而制訂的。屋宇署會按實際需要不時更改有關要求。


Note: The above table is based on the requirements as stipulated in the Practice Note for Authorized Persons, Registered Structural Engineers and Registered Geotechnical Engineers ADM-2 issued by the Buildings Department. The Buildings Department may revise such requirements from time to time as appropriate.

建築物的環境評估

綠色建築認證

在印刷此售樓說明書前，本物業根據香港綠色建築議會有限公司頒授 / 發出的綠建環評認證評級。

暫定評級  
銅級



暫定  
銅級

NB V1.1 2015

HKGBC  
綠建環評


申請編號: PAB0019/17

Environmental Assessment of the Building

Green Building Certification

Assessment result under the **BEAM Plus** certification conferred / issued by Hong Kong Green Building Council Limited (HKGBC) for the building prior to the printing of the sales brochures.

Provisional  
BRONZE



PROVISIONAL  
BRONZE

NB V1.1 2015

HKGBC  
BEAM Plus

Application no.: PAB0019/17

181

申請建築物總樓面面積寬免的資料

Information in application for concession on gross floor area of building

有關建築物的環境評估及發展項目的公用部分的預計能量表現或消耗
The Environmental Assessment of the Building and Information on the Estimated Energy Performance or Consumption for the Common Parts of the Development

於印製售樓說明書前呈交予建築事務監督發展項目的公用部分的預計能量表現或消耗的最近期資料：
Latest information on the estimated energy performance or consumption for the common parts of the development as submitted to the Building Authority prior to the printing of the sales brochures:

第I部分 Part I		
提供中央空調 Provision of Central Air Conditioning	是 YES	
提供具能源效益的設施 Provision of Energy Efficient Features	是 YES	
擬安裝的具能源效益的設施 Proposed Energy Efficient Features	<div><div><div>1. 建議使用低輻射玻璃，減少太陽輻射熱傳遞到樓宇，以減少樓宇使用的冷氣量。</div><div>2. 建議使用高效率的水冷式冷水機組提供空調在酒店裙樓和塔樓部分。</div><div>3. 建議使用高效率的單一空調機提供空調在住宅塔樓部分。</div><div>4. 建議使用節能燈 (T5熒光燈管和緊湊型熒光燈)，以減少照明能源使用。</div><div>5. 建議採用節能電梯 (變壓變頻(VVVF)驅動牽引電梯)，以減少垂直運輸的能源消耗。</div></div><div><div>1. Proposed to use of low-e glazing to reduce the solar heat gain to the building, which reduce the cooling energy used.</div><div>2. Proposed to use of high efficiency water cooled chiller to provide Air conditioning for Hotel in podium and tower portion.</div><div>3. Proposed to use of high efficiency unitary air conditioner to provide air conditioning for residential tower.</div><div>4. Proposed to use energy saving lighting (T5 fluorescent tube and compact fluorescent lamp) to reduce the energy use in lighting.</div><div>5. Proposed to use energy saving lift (Variable voltage variable frequency (VVVF) drive traction lift) to reduce the energy use in vertical transport.</div></div></div>	

第II部分：擬興建樓宇預計每年能源消耗量(註1) Part II : The predicted annual energy use of the proposed building (Note 1)						
發展項目類型 Type of Development	位置 Location	使用有關裝置的內部樓面面積 (平方米) Internal Floor Area Served (m²)	基線樓宇(註2)每年能源消耗量 (平方米/年) Annual Energy Use of Baseline Building (Note 2) (m²/annum)		擬興建樓宇每年能源消耗量 (平方米/年) Annual Energy Use of Proposed Building (m²/annum)	
			電力 Electricity 千瓦小時 kWh	煤氣/石油氣 用量單位 Town Gas / LPG unit	電力 Electricity 千瓦小時 kWh	煤氣/石油氣 用量單位 Town Gas / LPG unit
住用發展項目 (不包括酒店) Domestic Development (excluding Hotel)	中央屋宇裝備裝置(註3)的部分 Central building services installation (Note 3)	72,325	125.87	0	108.73	0
非住用發展項目 (註4) Non-domestic Development (including Hotel) (Note 4)	塔樓 (中央屋宇裝備裝置) Tower(s) (central building services installation)	37,759	443.05	0	374.57	0

註： 一般來說，樓宇的預計每年每平方米能源消耗量愈低，樓宇的能源消耗愈有效。例如，如果擬興建樓宇的預計每年能源消耗量少於基線樓宇預計的每年能源消耗量，則表示擬興建樓宇的預計能源使用較基線樓宇有效。減少愈多，效能愈大。

Note: In general, the lower the estimated “Annual Energy Use” of the building, the more efficient of the building in terms of energy use. For example, if the estimated “annual energy use of proposed building” is less than the estimated “annual energy use of baseline building”, it means the predicted use of energy is more efficient in the proposed building than in the baseline building. The larger the reduction, the greater the efficiency.

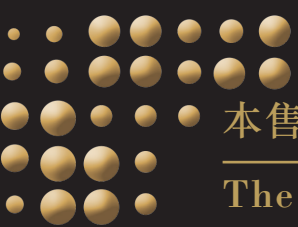
第III部分：以下裝置乃按機電工程署公布的相關實務守則設計 Part III : The following installation(s) are designed in accordance with the relevant Codes of Practices published by the Electrical & Mechanical Services Department (EMSD)			
裝置類型 Type of Installations	是 YES	否 NO	不適用 N/A
照明裝置 Lighting Installations	✓		
空調裝置 Air Conditioning Installations	✓		
電力裝置 Electrical Installations	✓		
升降機及自動梯的裝置 Lift & Escalator Installations	✓		
以總能源為本的方法 Performance-based Approach	✓		

註腳：

1. 預計每年每平方米能源消耗量〔以耗電量(千瓦小時)及煤氣/石油氣消耗量用量單位〕計算)，指將發展項目的每年能源消耗總量除以使用有關裝置的內部樓面面積所得出的商，其中：
  - (a) “每年能源消耗量”與新建樓宇BEAM Plus標準(現行版本)第4節及附錄8中的「年能源消耗」具有相同涵義；及
  - (b) 樓宇、空間或單位的“內部樓面面積”，指外牆及/或共用牆的內壁之內表面起量度出來的樓面面積。
2. “基線樓宇”與新建樓宇BEAM Plus標準(現行版本)第4節及附錄8中的“基準建築物模型(零分標準)”具有相同涵義。
3. “中央屋宇裝備裝置”與機電工程署發出的《屋宇裝備裝置能源效益實務守則》中的涵義相同。
4. 平台一般指發展項目的最低部分(通常為發展項目最低15米部分及其地庫(如適用))，並與其上的塔樓具有不同用途。對於並無明確劃分平台與塔樓的發展項目，應視整個發展項目為塔樓。

Notes:

- 1 The predicted annual energy use per m<sup>2</sup> per annum, in terms of electricity consumption (kWh) and town gas/LPG consumption (unit) of the development by the internal floor area served, where: -
  - (a) “total annual energy use” has the same meaning of “annual energy use” under Section 4 and Appendix 8 of the BEAM Plus for New Buildings (current version); and
  - (b) “internal floor area”, in relation to a building, a space or a unit means the floor area of all enclosed space measured to the internal faces of enclosing external and/or party walls.
2. “Baseline Building” has the same meaning as “Baseline Building Model (zero-credit benchmark)” under Section 4 and Appendix 8 of the BEAM Plus for New Building (current version).
3. “Central Building Services Installation” has the same meaning as that in the Code of Practice for Energy Efficiency of Building Services Installation issued by the Electrical and Mechanical Services Department.
4. Podium(s) normally means the lowest part of the development (usually the lowest 15m of the development and its basement, if any) carrying different use(s) from that of the tower(s) above. For development without clear demarcation between podium(s) and tower(s), the development, as a whole, should be considered as tower(s).

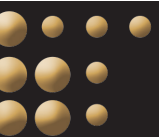


本售樓說明書的印製日期

The date on which this sales brochure is printed

2017年3月15日

15th March 2017



改變

Changes

發展項目及其周邊地區日後可能出現改變。

There may be future changes to the Development and the surrounding areas.









